



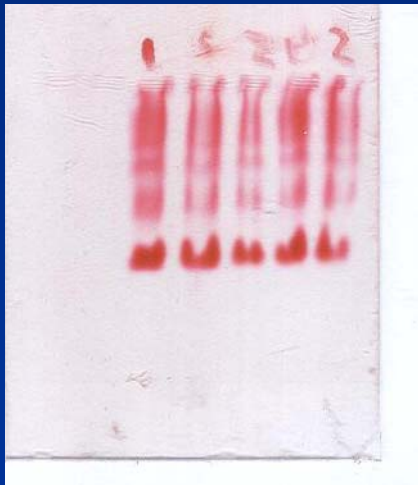
SDS –PAGE and Western blot analysis

Alaa El -Din Hamid Sayed,

Alaa_h254@yahoo.com

Methods of protein Detection

Cellulose acetate plates



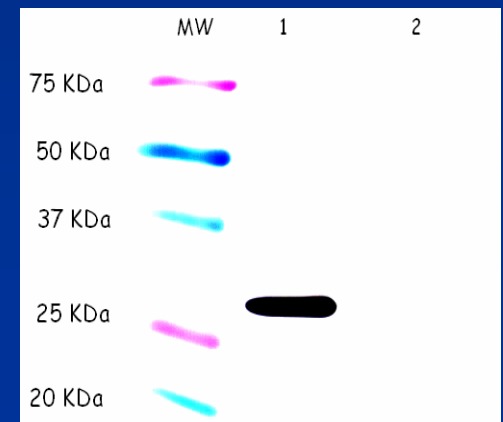
Sodium Dodecyl Sulfate (SDS)-Polyacrylamide Gel Electrophoresis (SDS-PAGE)

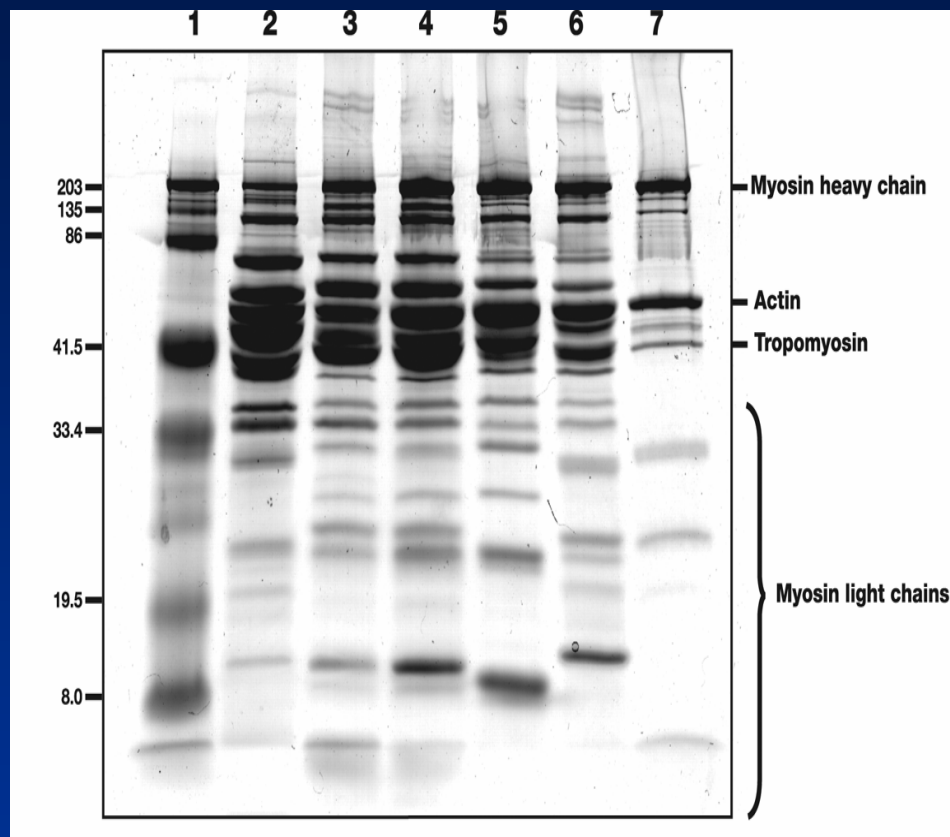
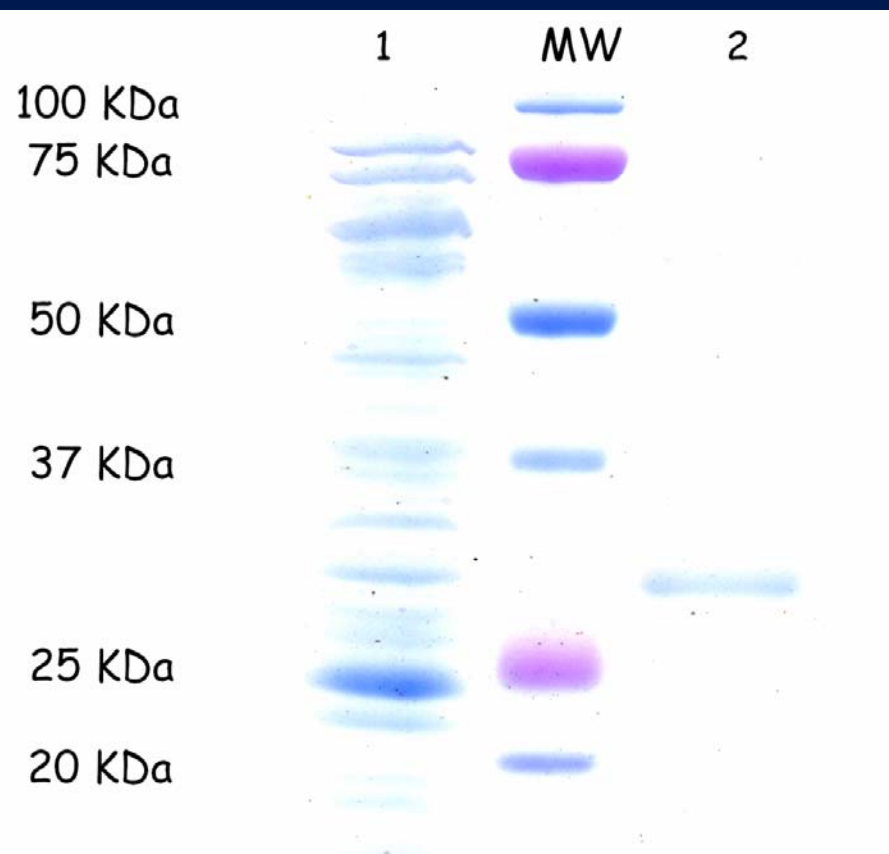
* Visualize many proteins at once



SDS-PAGE combined with immunoblotting (Western blot)

* Visualize one protein out of complex mixture





Gel Analysis

**you can analyze your profile
using suitable software
like such as**

1- NIH Image Software

2- Lab Image

3- Gel Pro Analyzer

A baby is shown from the chest up, looking up at a large, bright full moon in a dark blue night sky with wispy clouds. The baby's right arm is raised towards the moon. A blue speech bubble with a white outline points from the baby's mouth towards the moon. Inside the speech bubble, the word "Questions" is written in white. In the bottom right corner, there is a rectangular box with a black top section, a white middle section containing the Arabic text "تحيا مصر" (Tahya Misr), and a red bottom section.

Questions

تحيا مصر