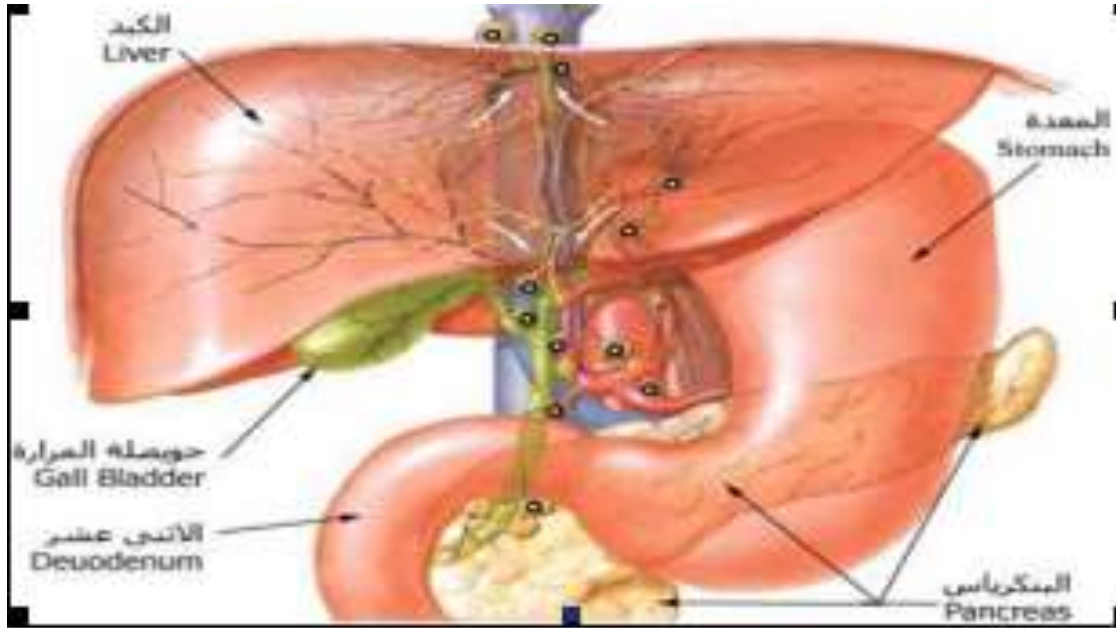


Master Degree of Tropical Medicine & Gastroenterology (Complete Log Book)

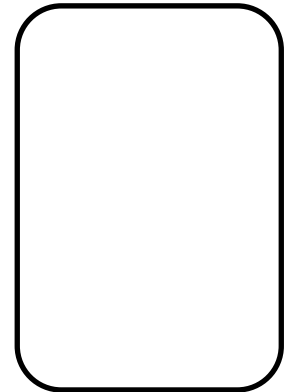


” كراسة الأنشطة ”

ماجستير طب المناطق الحارة والجهاز الهضمي
طبقاً للائحة النقاط المعتمدة (كامل)
2022-2023



Personal photo



Name.....
 Date of birth.....
 Address.....
 Place of work.....
 Telephones..... Mobile phone(s).....
 E mail.....

Name of hospital	Period of work	Hospital director signature

Academic Information

MBBCh...../...../..... University Grade

Grade of Internal Medicine course on graduation



First Part



First Part

Academic activities of basic sciences

Practice with the academic departments during year 1

Course 1

- Unit (Module) 1 (Microbiology)
- Unit (Module) 2 (Pharmacology)

Course 2

- Unit (Module) 1 (Parasitology)
- Unit (Module) 2 (Public Health)

Course 3

- Unit (Module) 1 (Pathology)
- Unit (Module) 2 (Anatomy)

Course 4

(Physiology)

Course 5

(Internal Medicine)

Course 6

(Clinical pathology)

Course 1



Unit (Module) 1 (Microbiology)

Requirements

● **Credit points: 1.25 credit point.**

- Minimal rate of attendance 80% of lectures

Name of the course	Credit points	Responsible department	Attendance	Percentage of Achieved points
Microbiology	0.5	Microbiology	5 hours <ul style="list-style-type: none"> ✚ General bacteriology ✚ Bacterial structure, growth and metabolism ✚ Antimicrobial agents and resistance to antimicrobials. ✚ Specific microorganisms and diseases as Salmonella and other gram negative organisms, Tuberculosis, brucellosis, Staphylococci and streptococci 	40%
	0.25		2.5 hours <ul style="list-style-type: none"> ✚ Immunology Basic immunology Immunologic diagnostic test and serology 	20%
	0.25		2.5 hours <ul style="list-style-type: none"> ✚ General virology - Interferon and antiviral agents ✚ Sterilization ✚ Nosocomial (hospital acquired) infection 	20%
	0.25		2.5hours <ul style="list-style-type: none"> ✚ PUO ✚ Water born infection and milk born infection ✚ Blood transmitted infection. 	20%
Student Signature			Principle Coordinator Signature	Head of the department signature

Microbiology Lectures



Course 1

Unit (Module) 2 (Pharmacology)

Requirements

● **Credit points: 1.25 credit point.**

- Minimal rate of attendance 80% of lectures

Name of the course	Credit points	Responsible department	Attendance	Percentage of Achieved points
Pharmacology	0.5	Pharmacology	5 hours -Antimicrobial Chemotherapy -Chemoprophylaxis -Antimicrobial resistance- -Anti parasitic drugs -Interferon -Antiviral drugs	40%
	0.25		2.5 hours -Anti ulcer drugs - Diuretics -Drugs for diarrhea	20%
	0.25		2.5 hours Drug for GIT bleeding - Drugs of portal hypertension - Drugs of Hepatic encephalopathy	20%
	0.25		2.5 hours -Drugs used safely in liver disease -Drugs contraindicated in liver patients -Ant tuberculosis drugs (TB chemotherapy)	20%
Student signature			Principle coordinator signature	Head of the department signature



Course 2

Unit (Module) 1 (Parasitology)

Requirements

● **Credit points: 1.25 credit point.**

- Minimal rate of attendance 80% of lectures

Name of the course	Credit points	Responsible department	Attendance	Percentage of Achieved points
Parasitology	0.5	Parasitology	5 hours - Helminthic infestations (details)	40%
	0.5		5 hours Protozoal infestations	40%
	0.25		2.5 hours -Clinical Parasitology	20%
Student signature			Principle coordinator signature	Head of the department signature

Course 2

Unit (Module) 2 (Public Health)

Requirements

◆ **Credit points: 1.25 credit point.**

- Minimal rate of attendance 80% of lectures

Name of the course	Credit points	Responsible department	Attendance	Percentage of Achieved points
Public Health	0.5	Public Health	5 hours + General epidemiology of communicable and non communicable diseases + Vaccination + Nosocomial Infection	40%
	0.5		5 hours + Epidemiology of selected GIT and liver communicable diseases <ul style="list-style-type: none"> ▪ Hepatitis ▪ Brucellosis ▪ Tuberculosis ▪ Meningitis ▪ Typhoid. 	40%
	0.25		2.5 hours + Medical statistics (Methods of data collection, Select, apply and interpret the proper test of significance and sample size collection)	20%
Student signature			Principle coordinator signature	Head of the department signature



Course 3

Unit (Module) 1 Pathology

Requirements

◆ **Credit points: 1 credit point.**

- Minimal rate of attendance 80% of lectures



Name of the course	Credit points	Responsible department	Attendance	Percentage of Achieved points
Pathology	0.5	Pathology	5 hours + Principles of Pathology of: <ul style="list-style-type: none"> ▪ Diagnostic cytology. ▪ Hepatosplenic Shistosomiasis ▪ Tuberculosis ▪ Typhoid fever ▪ Liver abscess 	50%
	0.5		5 hours + Pathologic Details of: <ul style="list-style-type: none"> ▪ Peptic ulcer ▪ Intestinal ulcer ▪ Acute viral hepatitis ▪ Chronic hepatitis ▪ Liver cirrhosis ▪ Hepatocellular Carcinoma 	50%
Student signature			Principle coordinator signature	Head of the department signature



Course 3

Unit (Module) 2 (Anatomy)

Requirements

● **Credit points: 1 credit point.**

- Minimal rate of attendance 80% of lectures

Name of the course	Credit points	Responsible department	Attendance	Percentage of Achieved points
Anatomy	0.5	Anatomy	5 hours ✚ Anatomic principles of <ul style="list-style-type: none"> ▪ Liver, surface anatomy, segments of liver, its blood supply, venous and lymphatic drainage ▪ Biliary system (gall bladder and bile channels) ▪ Spleen, surface anatomy, its blood supply, venous and lymphatic drainage ▪ Pancreas 	50%
	0.5		5 hours -Anatomic principles of GIT <ul style="list-style-type: none"> • Basic structure of the gastrointestinal system • Individual components of the gastrointestinal system <ol style="list-style-type: none"> 1. Oesophagus 2. Stomach 3. Small intestine 4. Large intestine 	50%
Student signature			Principle coordinator signature	Head of the department signature



Course 4

(Physiology)

Requirements

◆ **Credit points: 1 credit point.**

- Minimal rate of attendance 80% of lectures

Name of the course	Credit points	Responsible department	Attendance	Percentage of Achieved points
Physiology	0.5	Physiology-	5 hours ✚ Physiologic Principles of -GIT secretion and hormones -GIT motility -Digestion and absorption -Physiology of swallowing and defecation -Acid-base balance -Bilirubin metabolism	50%
	0.5		5 hours ✚ Physiologic Principles of -Pathogenesis of pyrexia -Regulation of body temperature ✓ Centre and mechanism for regulation of body temperature. ✓ Reaction of body on exposure to cold and hot ✓ Abnormalities of regulation of body temperature. ✚ Physiologic Principles of Blood • General components of blood and its functions. • Mechanism of blood coagulation. • Clinical conditions occurring due to abnormalities of one or more of the blood components.	50%
Student signature			Principle coordinator signature	Head of the department signature

Course 5

Internal Medicine

Requirements

- **Credit points:** 5 Credit point for didactic (lectures, seminars, tutorial) and 7 point for training.
- + Minimal rate of attendance 80% of didactic and training
- + Attendance two months in internal medicine during year one
- + Practice with clinical cases for at least 2 weeks in each of the following:
 - Cardiology Unit of internal medicine
 - Endocrinology unit
 - Hematology unit
 - Rheumatology units & Nephrology Unit
- + Practice with clinical cases for 2 weeks and the Log of at least 2 cases of each disease mentioned in Internal Medicine course.
- + Log of 20 ECG.



Name of the course	Credit points	Responsible department	Attendance	Percentage of Achieved points
Internal Medicine	1	Internal Medicine	10 hours Nephrology a-Renal failure b-Nephritis c- Nephrotic syndrome	20%
	1		10 hours Cardiology Heart failure Rheumatic fever Infective endocarditis- Hypertension Ischemic heart diseases and cardiomyopathy	20%
	1		10 hours - Hematology a- Lymphomas and leukaemia b- Coagulation disorders c- Anemia	20%
	1		10 hours -Neurological diseases Diabetic Neuropathy Collagen vascular and systemic diseases SLE and Rheumatoid arthritis	20%
	1		10 hours - Endocrinology a- Diabetes mellitus b- Thyroid diseases c- Adrenal gland diseases	20%
Student Signature			Principle coordinator signature	Head of the department signature



Clinical training	Credit points	Responsible department	Attendance	Percentage of Achieved points
Clinical training in Internal Medicine	2	Internal Medicine	2 weeks in Endocrinology unit of internal medicine - Log of 2 cases a- Diabetes mellitus b- Thyroid diseases c- Adrenal gland diseases	28.6%
	2		2 weeks in Cardiology Unit of internal medicine - Log of 2 cases a-Heart failure b- Rheumatic fever c- Valvular heart diseases d-AF e- Hypertension f-Ischemic heart disease - Log of 20 ECG.	28.6%
	2		2 weeks in Haematology - Log of 2 cases a- Lymphomas b-Leukemia c-Anaemias d- Coagulation disorders	28.6%
	0.5		1 weeks in Nephrology Unit + Log of 2 cases a-Renal failure b-Nephritis c- Nephrotic syndrome	7.1%
	0.5		1 weeks in Rheumatology unit - Log of 2 cases SLE and Rheumatoid arthritis	7.1%
Student signature			Principle coordinator signature	Head of the department signature



Module
Principles of Basics of internal medicine Course
Rotation and attendance in Units

Date From ---- to----	Unit	Duration	Signature of supervisor



Course 6

Clinical Pathology

Requirements

● **Credit points:** 1 credit point for didactic (lectures, seminars, tutorial) and 3 point for training. Minimal rate of attendance 80% of didactic and training

Name of the course	Credit points	Responsible department	Attendance	Percentage of Achieved Points
Clinical Pathology	1 CP	Clinical Pathology	Attendance 10 hours or active participation 5 hours	100%
	0.2	Clinical Pathology	2 hours <ul style="list-style-type: none"> ▪ Specimens collection ▪ Venipuncture (technique, precaution and pre analytical errors) ▪ Urine analysis. 	20 %
	0.4		4 hours <ul style="list-style-type: none"> ▪ Peripheral hemogram and interpretation. ▪ Types of anemia. ▪ Interpretation of bone marrow aspiration ▪ Blood component therapy and hazards of blood transfusion 	40%
	0.4		4 hours <ul style="list-style-type: none"> ▪ Practical points and interpretations of ascitic fluid analysis. ▪ Practical points and interpretations of oral glucose tolerance test. ▪ Practical points and interpretations of liver Function. ▪ Practical points and interpretations of Hepatitis Markers. ▪ Practical points and interpretations of kidney functions. ▪ Practical points and interpretations of electrolytes. 	40%
Student signature			Principle coordinator signature	Head of the department signature



Year 1

(14 credit point for training in Tropical Medicine and Gastroenterology)

Clinical training	Credit points	Responsible department	Attendance	Percentage of Achieved points
Clinical training in Tropical Medicine and gastroenterology	4	Tropical Medicine and gastroenterology	<ul style="list-style-type: none"> ➤ Practice with clinical cases in the department including emergent cases in gastroenterology & hepatology and interpretation of their different related laboratory investigation ➤ Log of cases as mentioned below ➤ Procedures log as mentioned below 	28.6%
	5		<ul style="list-style-type: none"> ➤ Night shift (From 2 pm to 8 am) at least 1/week for 10 weeks 	35.7%
	2		<ul style="list-style-type: none"> ➤ Attendance of at least one month in the Outpatient clinic (4 hours /day) 	14.3%
	2		<ul style="list-style-type: none"> ➤ Attendance of at least 25% of clinical rounds of the 4 staff groups (2 hours /week for 30 week) 	14.3%
	1		<ul style="list-style-type: none"> ➤ Attendance of at least 60% of the clinical seminars ➤ Presentation of at least 1 case in the seminar 	7.1 %
Student signature			Principle coordinator Signature	Head of the department signature



Module: Gastroenterology

Cases	Level of participation*
Dysphagia	
Dyspepsia (GU, DU, GERD, Duodenitis, Gastritis)	
Diarrhea (IBS, IBD, Malabsorption, TB)	
Constipation	
TB peritonitis	
Acute pancreatitis	

- * Level of participation
 A- Plan and carry out
 B- Carry out
 C- Carry out under supervision

Module: Hepatology

Cases	Level of participation*
- Acute viral hepatitis (A- E)	
- Chronic hepatitis (causes, management)	
- Liver cirrhosis (causes, management of complication, LCF)	
- Hepatic focal lesion	
- Jaundice and Cholestasis	
- Hepatosplenomegaly	
-Portal hypertension	
-Liver abscess (Pyogenic and amoebic)	
- Cholecystitis (Acute & chronic)	



<u>Emergency in gastroenterology</u>	Level of participation*
CASES	
-Upper GIT bleeding	
-Lower GIT bleeding	
-Acute abdominal pain (specially , medical causes of acute abdomen)	
-Intestinal obstruction and (pseudo obstruction)	
-Diabetic emergencies (Hyperglycaemia, Hypoglycaemia)	
Sever gastroenteritis (dehydration)	

- * Level of participation
 A- Plan and carry out
 B- Carry out
 C- Carry out under supervision

Emergency in hepatology	Level of participation*
-Hepatic encephalopathy	
-Hepatorenal syndrome	
-Fulminant hepatitis	

Emergency in <i>Hematology</i>	Level of participation*
-Blood transfusion reactions	



1-Clinical Rotation, Outpatient clinic, Case log and Night Shift

Clinical Rotation

Date/ Duration from -to	Location	Signature of supervisor



Outpatient clinic

Date/ Duration from -to	Signature of supervisor	Date/ Duration from -to	Signature of supervisor



(Clinical case log)

Date	Diagnosis of case	*Level of participation	Location	Signature of supervisor

- * Level of participation
- A- Plan and carry out
- B- Carry out
- C- Carry out under supervision



(Clinical case log)

Date	Diagnosis of case	*Level of participation	Location	Signature of supervisor

- * Level of participation
A- Plan and carry out
B- Carry out
C- Carry out under supervision



Clinical case log

Date	Diagnosis of case	*Level of participation	Location	Signature of supervisor

* Level of participation
 A- Plan and carry out
 B- Carry out
 C- Carry out under supervision



Clinical case log

Date	Diagnosis of case	*Level of participation	Location	Signature of supervisor

* Level of participation
A- Plan and carry out
B- Carry out
C- Carry out under supervision



Night Shift

Date	Signature of supervisor	Date	Signature of supervisor



2-Staff groups Clinical rounds log

Date	Place	Attendance	Case presentations	Signature of supervisor



2-Staff groups Clinical rounds log

Date	Place	Attendance	Case presentations	Signature of supervisor



3- Clinical Seminars

Requirements:

- Attendance of at least 60% of the clinical seminars
- Presentation of at least one case in the seminar

3-A: Attendance

Date	Attendance	Topic	Signature



3- Clinical Seminars

Requirements:

- Attendance of at least 60% of the clinical seminars
- Presentation of at least one case in the seminar

3-A: Attendance

Date	Attendance	Topic	Signature



4-Procedures log book

Observe (C):	Perform under supervision(B):
<ul style="list-style-type: none"> • 5 Abdominal paracentesis • 5 Sengestaken tube insertion • 5 I.V Catheter • 5 Urinary Catheter • 5 Pleural fluid aspirate • 5 Ryle fixation • 5 Gastric wash • 5 Urinalysis • 5 Arterial Blood gas sampling • 5 ECG 	<ul style="list-style-type: none"> • 5 Abdominal paracentesis • 5 Sengestaken tube insertion • 5 I.V Catheter • 5 Urinary Catheter • 5 Pleural fluid aspirate • 5 Ryle fixation • 5 Gastric wash • 5 Urinalysis • 5 Arterial Blood gas sampling • 5 ECG
Independently Perform(A)	
<ul style="list-style-type: none"> • 5 Abdominal paracentesis • 5 Sengestaken tube insertion • 5 Ryle fixation • 5 Gastric wash • 5 I.V Catheter • 5 Urinary Catheter • 5 ECG 	



Test for the competency in the procedure*

Date	Procedure	Level of competency*	Signature of supervisor

Level of competency *

- A- Independent performance
- B- Performance under supervision
- C- Observed



Test for the competency in the procedure*

Date	Procedure	Level of competency*	Signature of supervisor

Level of competency *

- A- Independent performance
- B- Performance under supervision
- C- Observed



Test for the competency in the procedure*

Date	Procedure	Level of competency*	Signature of supervisor

- Level of competency ***
- A- Independent performance
 - B- Performance under supervision
 - C- Observed



Test for the competency in the procedure*

Date	Procedure	Level of competency*	Signature of supervisor

Level of competency *

- A- Independent performance
- B- Performance under supervision
- C- Observed



Second Part

Second Part (Course 7)

Principles of Tropical Medicine and Gastroenterology

Requirements

- **Credit points:** 24 credit point for didactic (lectures, seminars, tutorial) during year 2 and year 3 (1.5 credit point out of these 24 for formative assessment - twice /year or at least 3 exam during whole period)
- 110 credit point for training (14 credit point during year 1 and 96 credit point during year 2 and year 3) (4-6 credit point out of these 96 for formative assessment - twice /year or at least 3 exam during whole period)
- Minimal rate of attendance 80% of didactic and training

*Tropical Medicine and Gastroenterology Course

Units' Titles' list	% from total Marks	Level (Year)	Core Credit points		
			Didactic	Training	total
1) Unit (Module) 1 Gastroenterology	25%	1, 2, 3	6	27.5	33.5
2) Unit (Module) 2 Hepatology	25%	1, 2, 3	6	27.5	33.5
3) Unit (Module) 3 Infectious Diseases	25%	2, 3	6	27.5	33.5
4) Unit (Module) 4 Nutrition	5%	2, 3	1	5.5	6.5
5) Unit (Module) 5 Hematology	5%	2, 3	1	5.5	6.5
6) Unit (Module) 6 Tropical Emergencies.	15%	1,2, 3	4	16.5	20.5
Total No. of Units (6 Modules):	100%		24	110	134



Year 2

(12 credit point for didactic in Hepatology and & 50% of gastroenterology and Hematology in tropics and 50 % of tropical emergencies including their formative assessment)

Name of the course	Credit points	Responsible department	Attendance	Percentage of Achieved points
Hepatology Haematology And their emergencies 50 % of gastro- enterology 50 % of the Tropical emergencies	12	Tropical Medicine and gastro- enterology	Year 2	100% of the didactics of Unit Hepatology and Haematology 50 % of gastroenterology 50 % of the Tropical emergencies
	7		Topics and attendance 70 hour One lecture /week (Lectures Schedule as described below)	58.3%
	3.25 (At least 2 of them for topics in Hepatology)		Seminars 2 hours- once / week for at least 6 month ➤ Attendance of at least - 80% of the clinical seminars for residence ➤ Attendance of at least 70% of the clinical seminars for the external ➤ Presentation of at least 1 time in the seminar	27.2%
	1		Conference or workshop	8.3%
	0.75		Formative assessment	6.2%
Student signature			Principle coordinator Signature	Head of the department signature



Lectures Schedule in year 2

N.B there are additional topics in the course matrix and will be either presented in the seminar by the candidates or self study by the candidates or presented in the conference

Name of the course	Credit points	Attendance	Percentage of Achieved points
100% of the didactics of Unit Hepatology and Haematology 50 % of gastroenterology 50 % of the Tropical emergencies	7	Year 2	100%
	4	-Hepatology and its emergency	57.1%
	(Total 0.5)	5 hours	
	0.2	-Chronic hepatitis	
	0.2	-NAFLD(Fatty liver and NASH and insulin resistance)	
	0.1	-Spontaneous Bacterial peritonitis	
	(Total 0.5)	5 hours	
	0.2	-Primary hepatic tumor (HCC)	
	0.2	-Secondary hepatic tumors and benign liver tumors	
	0.1	-Liver abscesses	
	(Total 0.5)	5 hours	
	0.2	-Autoimmune liver diseases	
	0.1	-Fulminant Hepatitis	
	0.1	-Jaundice and Cholestasis	
	0.1	-Budd – chiari syndrome	



	(Total 0.5)	5 hours	
	0.2	-Liver and lung relations including Hepatopulmonary syndrome	
	0.2	-Drug induced liver disease	
	0.1	-Liver and kidney	
	(Total 0.5)	5 hours	
	0.2	-Liver diseases in pregnancy	
	0.1	-Liver diseases in elderly	
	0.1	-Liver in systemic diseases	
	0.1	-Assessment of surgical risk in liver cirrhosis	
	(Total 0.5)	5 hours	
	0.1	Metabolic liver diseases as	
	0.1	-Wilson disease	
	0.1	-Haemochromatosis	
	0.2	-Abdominal US (Diagnostic and Interventional)	
	0.2	-Portal hypertension	
	(Total 0.5)	5 hours	
	0.2	- Over view on Liver transplantation	
	0.2	-Management of chronic hepatitis C.	
	0.1	-Natural history of hepatitis B and stages of infection	
	(Total 0.5)	2.5 hours	
		-Active participation by the	



		candidates in the seminar for additional topics (related to Hepatology as guidelines for management for common diseases)	
	(Total 0.5)	Haematology 5 hours	7.1%
	0.2	-Anemias in tropics	
	0.2	-Hematological changes in liver diseases	
	0.1	Hazards of Blood transfusion.	
	2.5	Gastroenterology 50% and its emergency	35.8%
	(Total 0.5)	5 hours	
	0.2	-GERD	
	0.1	-Gastritis & Non ulcer dyspepsia	
	0.1	- Peptic ulcer	
	0.1	-Drugs for peptic ulcers	
	(Total 0.5)	5 hours	
	0.2	-Tuberculosis of GIT tract	
	0.1	-Acute pancreatitis	
	0.2	-Chronic pancreatitis	
	(Total 0.5)	5 hours	
	0.1	-Crohn's disease	
	0.1	-Ulcerative colitis	
	0.1	-Update management of IBD	



	0.1	-Vascular malformation of intestine	
	0.1	-Diarrhea (Acute and infectious diarrhea)	
	(Total 1 credit point)	10 hours	
	0.3	- Gastrointestinal bleeding	
	0.2	-Abdominal pain	
	0.3	- chronic diarrhea and Malabsorption	
	0.2	-Intestinal ischemia	
Student signature		Principle coordinator signature	Head of the department signature



Year 2 (48 credit point for training in all units including mini clinical exam)

Clinical training	Credit points	Responsible department	Attendance	Percentage of Achieved points
Clinical training in Tropical Medicine and gastroenterology	48	Tropical Medicine and gastroenterology	Year 2	50% of the training in all units (Second part)
Tropical Medicine and gastroenterology	18		<ul style="list-style-type: none"> ➤ Practice with clinical cases for at least 4 month in the department including interpretation of their different radiologic patterns (in CXR & abdominal US) and related laboratory investigation ➤ Log of cases as mentioned below ➤ Procedures log as mentioned below 	
	8		<ul style="list-style-type: none"> ➤ Night shift (From 2 pm to 8 am) 1 night shift /week for 16 week 	
	2		<ul style="list-style-type: none"> ➤ Attendance of at least one month in the Outpatient clinic (3 hours/day) 	
	4		<ul style="list-style-type: none"> ➤ Attendance of One month in the general emergency department 	
	8		<ul style="list-style-type: none"> ➤ Attendance of at least two month in the tropical medicine intermediate care unit(ICU) 	
	2		<ul style="list-style-type: none"> ➤ Attendance of at least 25% of clinical rounds of each one of the 4 staff groups (2 hours/day for 30 week) 	
	2		<ul style="list-style-type: none"> ➤ Attendance of One month in Ultrasonography unit 	
	4		Mini clinical exam	
Student signature			Principle coordinator Signature	Head of the department signature



Year 3

(12 credit point for didactic in infectious diseases and gastroenterology 50% and nutrition and tropical emergencies including their formative assessment)

Name of the course	Credit points	Responsible department	Attendance	Percentage of Achieved points
Infectious diseases Nutrition 50 % of gastro- enterology 50 % of the Tropical emergencies	12	Tropical Medicine and gastroenterology	Year 3	100% of the didactics of Unit infectious diseases and nutrition 50 % of gastro- enterology 50 % of the Tropical emergencies
	8.25		Topics and attendance 80 hour One lecture /week (Lectures Schedule as described below)	
	2		Seminars 2 hours once / week for at least 6 month ➤ Attendance of at least 80% of the clinical seminars for residence ➤ Attendance of at least 70% of the clinical seminars for the external ➤ Presentation of at least 1 time in the seminar	
	1		Conference or workshop	
	0.75		➤ Formative assessment	
Student signature			Principle coordinator Signature	Head of the department signature



Lectures Schedule in year 3

N.B there are additional topics in the course matrix and will be either presented in the seminar by the candidates or self study by the candidates or presented in the conference

Name of the course	Credit points	Attendance	Percentage of Achieved points
Infectious diseases	8.25	Year 3	100%
Nutrition			
50 % of gastro- enterology			
50 % of the Tropical emergences			
	2.5%	Gastroenterology 50%	30.3%
	(Total 0.5)	5 hours	
	0.2	-Motility disorders	
	0.1	-Gastroparesis	
	0.2	-Irritable bowel syndrome	
	(Total 0.5)	5 hours	
	0.1	-Celiac disease	
	0.1	-Whipple's disease	
	0.1	-Pseudomembranous colitis	
	0.2	-Diverticular disease of the colon	
	(Total 0.5)	5 hours	
	0.2	-Endocrinal tumors of the pancreas	
	0.2	Gastrointestinal	



	0.1	polyposis -Protein losing enteropathy	
	(Total 0.5)	2.5 hours -Active participation by the candidates for additional topics (related to GIT) in the seminar	
	(Total 0.5)	5 hours	
	0.2 0.3	- Drug induced damage of the Gastrointestinal tract -Radiology in Gastrointestinal tract.	
	(Total 0.5)	Nutrition 5 hours	6.1 %
	0.3	-Active participation by the candidates for topics related to Nutrition as -Water-soluble vitamins deficiency -Fat-soluble vitamins deficiency -Assessment of Malnutrition	
	0.1	-Nutrition in liver diseases	
	0.1	-Nutrition in celiac disease.	
	4.75	Infections	57.6%



	(Total 0.5) 0.1 0.1 0.2 0.1	5 hours -Typhoid fever -Salmonella infection other than typhoid Brucellosis Food poisoning	
	(Total 0.5) 0.2 0.2 0.1	5 hours -E coli -Entero-colitides -H. pylori infection	
	(Total 0.5) 0.2 0.1 0.2	5 hours Pneumonia Infective Endocarditis Staphylococcal Infections	
	(Total 0.5) 0.2 0.2 0.1	5 hours Bacterial Meningitis Meningococcal Infections Leptospirosis	
	(Total 0.5) 0.3 0.1 0.1	5 hours - HIV infection Infectious mononucleosis Cytomegalovirus	



	(Total 0.5)	5 hours	
	0.2	Parasitic disease of the liver)	
	0.2	Hospital acquired infection	
	0.1	Infection in immunocompromized	
	(Total 0.5)	5 hours	
	0.2	- Antimicrobial Chemotherapy and their principals of use.	
	0.3	-Intestinal parasites and clinical parasitology	
	Total 1 credit point	5 hours	
		-Active participation by the candidates in the seminar for another topics related to infection or chemotherapy as present in the course specification	
	(Total 0.25)	2.5 hours	
		-Pyrexia of unknown origin(PUO)	
	0.5	Anesthesia and Post operative intensive care	6%
		-IV fluid therapy	
		-Electrolyte	



		imbalance -Blood gases interpretation -Management of Shocked patients -Vasoactive drugs -TPN -Mechanical ventilation (Indication, reading of parameter, weaning) -Oxygen therapy -Equipment	
Student signature		Principle coordinator signature	Head of the department signature



Year 3 (48 credit point for training in all unit including mini clinical exam)

Clinical training	Credit points	Responsible department	Attendance	percentage of Achieved points
Clinical training in Tropical Medicine and gastroenterology	48	Tropical Medicine and gastroenterology	Year 3	50% of the training in all units (Second part)
Tropical Medicine and gastroenterology	18		<ul style="list-style-type: none"> ➤ Practice with clinical cases for at least 3 month in the department including interpretation of their different radiologic patterns (in CXR & abdominal US) and related laboratory investigation ➤ Log of cases as mentioned below ➤ Procedures log as mentioned below 	
	8		➤ Night shift (From 2 pm to 8 am) 1 night shift /week for 16 week	
	2		➤ Attendance of at least one month in the Outpatient clinic (3 hours/day)	
	4		➤ Attendance of One month in the general emergency department	
	4		➤ Attendance of at least one month in the tropical medicine intermediate care unit (ICU)	
	2		➤ Attendance of at least 25% of clinical rounds of each one of the 4 staff groups (2 hours/day for 30 week)	
	4		➤ Attendance of one month in post operative intensive care unit	
	4		➤ Attendance of One month in endoscopy unit	
	2		Mini clinical exam	
Student signature			Principle coordinator Signature	Head of the department signature



Clinical case log book:

Module: Gastroenterology

Cases	Level of participation*
Dysphagia	
Dyspepsia (GU, DU, GERD, Duodenitis, Gastritis)	
Diarrhea (IBS, IBD, Malabsorption, TB)	
Constipation	
TB peritonitis	
Acute pancreatitis	
GIT Tumors	
<u>Emergency in gastroenterology</u> (As in tropical emergencies module)	

- * Level of participation
A- Plan and carry out
B- Carry out
C- Carry out under supervision



Module: Hepatology

Cases	Level of participation*
- Acute viral hepatitis (A- E)	
- Chronic hepatitis (causes, management)	
- Liver cirrhosis (causes, management of complication, LCF)	
- Hepatic focal lesion	
- Jaundice and Cholestasis	
- Hepatosplenomegaly	
-Portal hypertension	
-Liver abscess (Pyogenic and amoebic)	
- Cholecystitis (Acute & chronic)	
- Liver diseases in pregnancy	
-Drug induced liver diseases	
-Non alcoholic fatty liver diseases &steatohepatitis	
- Hydatid liver disease	
Emergency in hepatology (As in tropical emergencies module)	



Module: Infectious Diseases and Chemotherapy

Cases	Level of participation*
Typhoid fever	
Schistosomiasis	
PUO	
Brucellosis	
Heat Hyperpyrexia and Other heat disorders	
FMF	
HIV infection	
Infectious mononucleosis	

Module: Hematology and Nutritional Diseases

Cases	Level of participation*
- Anemia	
- Myeloproliferative disorders	
-Lymphoproliferative disorders	
Vitamins deficiencies	
Malnutrition	



Module Tropical Emergencies.

Requirements

- Attendance of at least 80 % of clinical rounds .
- Practice with clinical cases for at least one year in the Department of Tropical Medicine and Gastroenterology and infectious diseases unit wards including at least 3 months in the general medical and other departments emergency units and anesthesia intensive care unit.

<u>Emergency in gastroenterology</u>	Level of participation*
CASES	
-Upper GIT bleeding	
-Lower GIT bleeding	
-Acute abdominal pain (specially , medical causes of acute abdomen)	
-Intestinal obstruction and (pseudo obstruction)	
-Diabetic emergencies (Hyperglycaemia, Hypoglycaemia)	
Sever gastroenteritis (dehydration)	

* Level of participation

- A- Plan and carry out
- B- Carry out
- C- Carry out under supervision

Emergency in hepatology	Level of participation*
-Hepatic encephalopathy	
-Hepatorenal syndrome	
-Fulminant hepatitis	

Emergency in infectious diseases (uncommon)	Level of participation*
As seen in the department	



Emergency in <i>Hematology</i>	
-Blood transfusion reactions	
-Others as seen in the department	

<i>Anesthesia and postoperative intensive care units</i>	<i>Level of participation*</i>
-Cardiac arrest	
-Pulmonary oedema	
-Heat stroke	
-Shocked patients	
others as seen in the ICU	

* Level of participation

A- Plan and carry out

B- Carry out

C- Carry out under supervision



Outpatient clinic

Duration/date from -to	Signature of supervisor	Duration/date from -to	Signature of supervisor



Outpatient clinic

Date/ Duration from -to	Signature of supervisor	Date/ Duration from -to	Signature of supervisor



Clinical case log

Date	Diagnosis of case	*Level of participation	Location	Signature of supervisor

- * Level of participation
 A- Plan and carry out
 B- Carry out
 C- Carry out under supervision



Clinical case log

Date	Diagnosis of case	*Level of participation	Location	Signature of supervisor

* Level of participation
A- Plan and carry out
B- Carry out
C- Carry out under supervision



Clinical case log

Date	Diagnosis of case	*Level of participation	Location	Signature of supervisor

* Level of participation
A- Plan and carry out
B- Carry out
C- Carry out under supervision



Clinical case log

Date	Diagnosis of case	*Level of participation	Location	Signature of supervisor

* Level of participation
 A- Plan and carry out
 B- Carry out
 C- Carry out under supervision



Clinical case log

Date	Diagnosis of case	*Level of participation	Location	Signature of supervisor

* Level of participation
A- Plan and carry out
B- Carry out
C- Carry out under supervision



Clinical case log

Date	Diagnosis of case	*Level of participation	Location	Signature of supervisor

* Level of participation
 A- Plan and carry out
 B- Carry out
 C- Carry out under supervision



Clinical rounds log

Date	Attendance	Case presentation	Signature of supervisor



Clinical rounds log

Date	Attendance	Case presentation	Signature of supervisor



Night Shift

Date	Signature of supervisor	Date	Signature of supervisor



Night Shift

Date	Signature of supervisor	Date	Signature of supervisor



2- Clinical Seminars

Requirements: - Attendance of at least 80% of the clinical seminars
Presentation of at least (2) cases per year. Log of at least 1 evidence-based guidelines or topic per year.

2-A: Attendance

Date	Attendance	Topic	Signature



2-A: Attendance

Date	Attendance	Topic	Signature



2-A: Attendance

Date	Attendance	Topic	Signature



2-B: Case presentation /Topic presentation

Date	Topic presentation	Case	Signature



3- Post graduate teaching

3-A: lectures

Date	Title of lecture	Signature of Staff Member



3-A: lectures

Date	Title of lecture	Signature of Staff Member



3-A: lectures

Date	Title of lecture	Signature of Staff Member



3-A: lectures

Date	Title of lecture	Signature of Staff Member



3-B: Tutorial

Date	Title of Tutorial	Signature of Staff member



5- Procedures log book (For all modules)

Requirements:*

✚ Level of competency (A)	✚ Level of competency
<ul style="list-style-type: none"> ● Abdominal ultrasonography ● Abdominal paracentesis ● Sengestaken tube insertion ● ECG ● I.V Catheter ● Urinary Catheter ● Pleural fluid aspirate ● Ryle fixation ● Gastric wash ● Urinalysis ● Arterial Blood gas sampling 	<p>During year 2</p> <ul style="list-style-type: none"> ▪ Liver biopsy C and B ▪ Endoscopy C and B <p>During year 3 and after</p> <ul style="list-style-type: none"> ▪ Liver biopsy A ▪ Endoscopy A
	<p>In the Anesthesia intensive care unit B OR C</p>
	<ul style="list-style-type: none"> ● Cannulation including Central venous line ● Endotracheal intubation ● Equipments ● Total parenteral nutrition ● Mechanical ventilation ● Oxygen therapy
Level of competency *	
<p>A- Independent performance B- Performance under supervision C- Observed</p>	



Test for the competency in the procedure*

Date	Procedure	Level of competency*	Signature of supervisor

Level of competency *

- A- Independent performance
- B- Performance under supervision
- C- Observed



Test for the competency in the procedure*

Date	Procedure	Level of competency*	Signature of supervisor

Level of competency *

- A- Independent performance
- B- Performance under supervision
- C- Observed



Test for the competency in the procedure*

Date	Procedure	Level of competency*	Signature of supervisor

Level of competency *

- A- Independent performance
- B- Performance under supervision
- C- Observed



Formative assessment MCQ and clinical examination

Exam	Score	Grade*	Date	Signature

***Degree**
A- Excellent
B- Very good
C- Good
D- Pass
E- Bad



Postgraduate student's program
Rotation in training assessment

* **Name:**

* **Period of training From:**




To:

* **Site:**

***Rotation**

General skills	could not judge (0)	strongly disagree(1)	↩ (2) (3)		↩ (4) (5)		↩ (6)		strongly agree (7)
Perform practice-based improvement activities using a systematic methodology (share in audits and risk management activities and use logbooks).									
Appraises evidence from scientific studies.									
Conduct epidemiological studies and surveys.									
Perform data management including data entry and analysis and using information technology to manage information, access on-line medical information; and support their own education.									



General skills	could not judge (0)	strongly disagree(1)	 (2) (3)		 (4) (5)		 (6)	strongly agree (7)
Facilitate learning of students other health care professionals including their evaluation and assessment.								
Maintain therapeutic and ethically sound relationship with patients.								
Elicit information using effective nonverbal, explanatory, questioning, and writing skills.								
Provide information using effective nonverbal, explanatory, questioning, and writing skills.								
Work effectively with others as a member of a health care team or other professional group.								
Demonstrate respect, compassion, and integrity; a responsiveness to the needs of patients and society.								
Demonstrate a commitment to ethical principles including provision or withholding of clinical care, confidentiality of patient information, informed consent, business practices.								



General skills	could not judge (0)	strongly disagree(1)	↔		↔		strongly agree (7)
			(2)	(3)	(4)	(5)	
Demonstrate sensitivity and responsiveness to patients' culture, age, gender, and disabilities.							
Work effectively in relevant health care delivery settings and systems including good administrative and time management							
Practice cost-effective health care and resource allocation that does not compromise quality of care.							
Assist patients in dealing with system complexities.							



Elective course

Requirements

- Credit points: 2 credit point.
 - Minimal rate of attendance 80% of lectures and 80% of training
 - The student choose one of theses courses
- Medical statistics.
 - Evidence based medicine.
 - Medicolegal Aspects and Ethics in Medical Practice and Scientific Research
 - Quality assurance of medical education.
 - Quality assurance of clinical practice.
 - Hospital management



الرسائل العلمية

عنوان الرسالة

عربي : _____

انجليزي : _____

المشرفون : _____

1- _____

2- _____

3- _____

4- _____

تاريخ القيد لدرجة : / / _____

تاريخ التسجيل الموضوع : _____

المتابعة الدورية : _____

التاريخ	ما تم انجازه من بروتوكول البحث	المتبقي	توقيع المشرفين



Declaration:

Essential requirement for completing logbook of Master Tropical medicine and Gastroenterology

Course Structure Mirror	Responsible (Module) Coordinator Name:	Signature	Date
First part COURSE 1 Module 1(Microbiology) Module 2(Pharmacology)			
- COURSE 2 Module 1(Parasitology) Module 2(Public Health)			
-COURSE 3 Module 1 (Pathology) Module 2(Anatomy)			
- COURSE 4 (Physiology)			
- COURSE 5 (Internal Medicine)			
-Course 6 (Clinical pathology)			
Second part Course (7) Principles of Tropical Medicine and Gastroenterology. Module (Hepatology) Module (Gastroenterology) Module (Infection) Module (Hematology) Module (Nutrition) Module (Tropical Emergencies)			
- Elective Course (s) Certificate (s) Dates:			
- Master Degree Thesis Acceptance Date:	/ / 20		
- Fulfillment of required credit points prior to final examination	Achievement was done	/أ.د.	
M Sc Degree Principle Coordinator:	/أ.د.		
Date approved by Tropical Medicine Department Council:			

يعتمد ،
رئيس القسم
أ.د.