



Assiut University
Faculty of Medicine



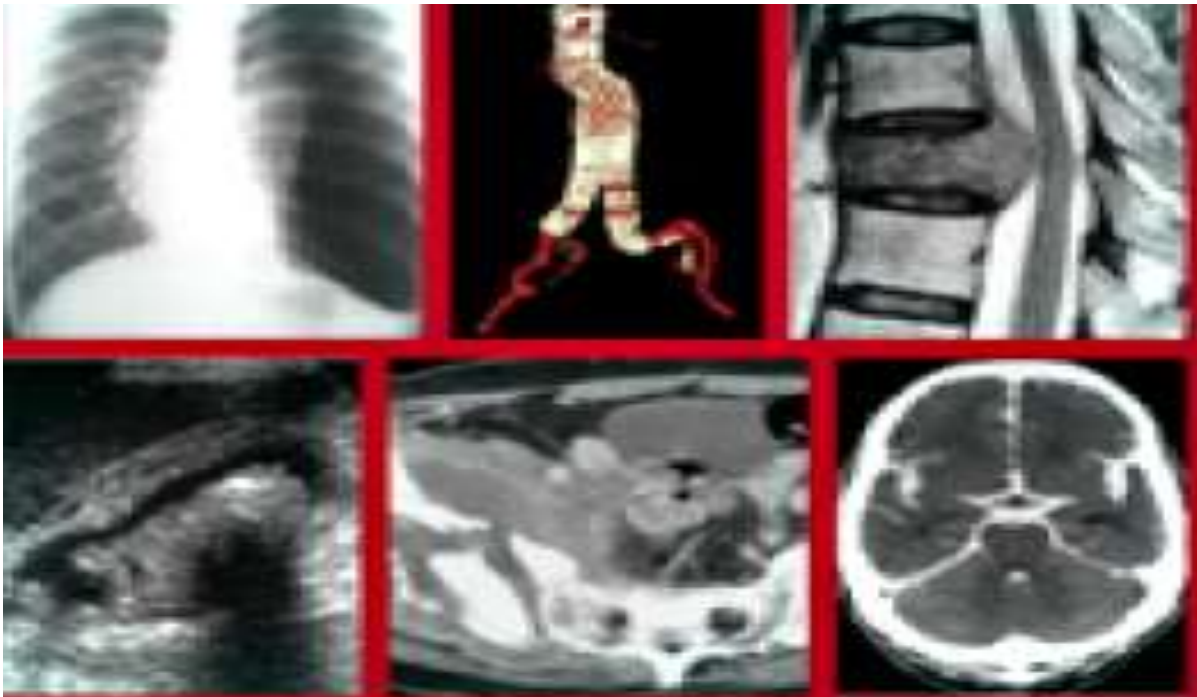
Faculty of Medicine
Quality Assurance Unit

Radiology log book for resident of radiology department

" كراسة الأنشطة "

اللازمة لحصول المتدرب على درجة الماجستير في الأشعة التشخيصية
طبقاً لللائحة النقاط المعتمدة

2022-2023





Assiut University
Faculty of Medicine



Faculty of Medicine
Quality Assurance Unit

بيانات شخصية عن المتدرب



تاريخ التسجيل لدرجة الماجستير



Assiut University
Faculty of Medicine



Faculty of Medicine
Quality Assurance Unit

Module Rotation / attendance proof
الأماكن التي تدرب بها

	توقيع مدير المستشفى	توقيع رئيس القسم	اسم المستشفى التي تدرب بها



First Part

Academic activities of basic sciences

Practice with the academic and clinical departments during year 1

- Course 1: Radiological Physics.
- Course 2: Radiological Technology
- Course 3: Radiological Anatomy
- Course 4: Radiobiology and radiological services.
- Course 5: Internal Medicine & General Surgery & Pathology



Course 1 Radiological Physics

Requirements

- **Credit points: 2.5 credit point** for didactic (lectures, seminars, tutorial)

Minimal rate of attendance 80% of didactic

Name of the course	Credit points	Responsible department	Attendance	Percentage of Achieved points
Radiological Physics	2.5 credit Point	Faculty of Science, Physics department		100%
	0.3		3 hour - Structure of the atom. - Electromagnetic radiation. - Particulate radiation.	12%
	0.3		3 Hour -Interaction of radiation with the matter .	12%
	0.3		3 Hour - Radiation units. - X-ray production.	12%
	0.3		3 Hour - Generators. - Technique factors .	12%
	0.3		3 Hour - Fluoroscopy. - System components. - Image intensifier.	12%
	0.5		5 Hour -Computed tomography.	20%
	0.5		5 Hour -Magnetic resonance imaging.	20%
Student signature			Head of the department signature	



Assiut University
Faculty of Medicine



Faculty of Medicine
Quality Assurance Unit

Radiological Physics lectures

Activity	Your role **	Date	Signature of supervisor

** Your role:-
A- Attendance
B- Organization
C- Presentation



Course 2 Radiological technology.

Requirements

- **Credit points: 2 credit point** for didactic (lectures, seminars, tutorial).
- Minimal rate of attendance 80% of didactic

Name of the course	Credit points	Responsible department	Attendance	Percentage of Achieved points
Radiological technology	2 credit point	Diagnostic Radiology department		100%
	0.4		4 hours Skull & skull base: -Different radiographic positioning, CT & MRI protocols.	20%
	0.3		3 hours Musculoskeletal system: -Radiographic positioning, CT protocols.	15%
	0.3		3 hours Chest: -Radiographic positioning, CT protocols.	15%
	0.1		1 hours Contrast Venous system: -Phlebography.	5%
	0.5		5 hours Gastrointestinal tract: -Radiographic positioning, CT protocols, different contrast (barium) studies.	25%
	0.4		4 hours Genitourinary system: -IVU, Lower urinary tract examinations, HSG.	20%
Student signature			Principle coordinator signature	Head of the department signature



Radiological technology : Lectures

Activity	Your role **	Date	Signature of supervisor

** Your role:-
 A- Attendance
 B- Organization
 C- Presentation



Course 3 Radiological anatomy

Requirements

- **Credit points: 2 credit point** for didactic (lectures, seminars, tutorial).
- Minimal rate of attendance 80% of didactic

Name of the course	Credit points	Responsible department	Attendance	Percentage of Achieved points
Radiological anatomy	2 credit Points	Diagnostic Radiology department		100%
	0.4		4 hours Intra-cranial anatomy & vascular anatomy of the cerebral circulation.	20%
	0.4		4 hours Normal radiographic, CT and MRI anatomy of the axial & appendicular skeleton.	20%
	0.4		4 hours Normal Chest X-ray, CT, CT angiography & Cardiovascular anatomy.	20%
	0.4		4 hours Normal Abdominal plain films, CT & vascular anatomy and variants.	20%
	0.4		4 hours Complex CT anatomy of the orbit, temporal bone, skull base, soft tissue of the neck.	20%
Student signature			Principle coordinator signature	Head of the department signature



Assiut University
Faculty of Medicine



Faculty of Medicine
Quality Assurance Unit

Radiological anatomy: Lectures

Activity	Your role **	Date	Signature of supervisor

** Your role:-
A- Attendance
B- Organization
C- Presentation



Course 4 Radiobiology and radiological services

Requirements

- **Credit points: 1.5 credit point** for didactic (lectures, seminars, tutorial).
- Minimal rate of attendance 80% of didactic

Name of the course	Credit points	Responsible department	Attendance	Percentage of Achieved points
Radiobiology and radiological services	1.5 credit Point	Oncology, Nuclear medicine & Diagnostic Radiology department		100%
	0.9		9 hours Radiological services (Dark Room) : General image processing. Fluoroscopy & radiological imaging. CT & MRI.	60%
	0.3		3 hours Radiobiology : Different effects & hazards of radiation. Radiation protection. Radiation dosimeter.	20%
	0.3		3 hours Nuclear medicine : Radioactive tracers & their techniques. Bone scan, Thyroid scan, Renal imaging, Hepatic imaging & imaging of Cardiovascular system.	20%
Student signature			Principle coordinator signature	Head of the department signature



Assiut University
Faculty of Medicine



Faculty of Medicine
Quality Assurance Unit

Radiobiology and radiological services Lectures

Activity	Your role **	Date	Signature of supervisor

** Your role:-
A- Attendance
B- Organization
C- Presentation



Assiut University
Faculty of Medicine



Faculty of Medicine
Quality Assurance Unit

Course 5: Internal Medicine & General Surgery & Pathology

Requirements of Credit points:

***6 credit points** for didactic (lectures, seminars, tutorial) [2 for pathology, 2 for internal medicine and 2 for general surgery] .

***10 credit points** for training in internal medicine and general surgery (5 for each). Minimal rate of attendance 80% of didactic and training .



Course 5 (Unit 1):Internal Medicine

Name of the course	Credit points	Responsible department	Attendance	Percentage of Achieved points
Internal medicine	2 credit Point	Internal medicine department	Attendance of 20 hours	100%
	0.2		2 hours Medical emergencies. -Acute renal failure -GIT bleeding -Pulmonary embolism	10%
	0.5		5 hours Endocrine system. -Thyroid & parathyroid glands lesions. -Adrenal gland lesions. -Pituitary gland lesions.	25%
	0.3		3 hours Renal diseases. -Chronic renal failure -Glomerulonephritis -Pyelonephritis -Kidney transplant	15%
	0.25		2.5 hours Cardiovascular system. -Angina. -Cardiomyopathy.	12.5%
	0.25		2.5 hours Respiratory system. -Pulmonary embolism -Bronchogenic Carcinoma .	12.5%
	0.5		5 hours Gastrointestinal tract. -Liver cirrhosis -Jaundice -Causes of hepatosplenomegaly.	25%
Student signature			Principle coordinator signature	Head of the department signature



Assiut University
Faculty of Medicine



Faculty of Medicine
Quality Assurance Unit

Internal medicine lectures

Date	Role	Title of lecture	Signature of Staff member

** Your role:-
A- Attendance
B- Active participation



Training in Internal Medicine

Clinical training	Credit points	Responsible department	Attendance	Percentage of Achieved points
Clinical training in Internal Medicine	5	Internal Medicine	4 weeks in internal medicine: Training in only clinical picture and diagnosis of diseases.	100%
	1.25 CP		1 week in Gastroenterology unit of internal medicine. - Log of 2 cases a-Liver cirrhosis. b-Jaundice.	25%
	1.25 CP		1 week in Nephrology Unit Log of 2 cases a-Renal failure b-Nephritis c- Nephrotic syndrome	25%
	1.25CP		1 week in Endocrine Unit Log of 2 cases a-Hyper, hypothyroidism. b-Addison's, Cushing disease. c-Acromegaly, Hypopituitarism.	25%
	1.25CP		1 week in Rheumatology unit - Log of 2 cases SLE and Rheumatoid arthritis	25%
Student signature			Principle coordinator signature	Head of the department signature



Assiut University
Faculty of Medicine



Faculty of Medicine
Quality Assurance Unit

Rotation and attendance in different units

Date From - to	Unit	Duration	Signature of supervisor



Assiut University
Faculty of Medicine



Faculty of Medicine
Quality Assurance Unit

Internal medicine Clinical cases log

Diagnosis of case	Location	* Level of participation	Signature of supervisor

* Level of participation:
 -Plan and carry out independently.
 B- Carry out
 C-Carry out under supervision



Internal medicine Clinical cases log

Diagnosis of case	Location	* Level of participation	Signature of supervisor

- * Level of participation:
- Plan and carry out independently.
 - B- Carry out
 - C-Carry out under supervision



Course 5 (Unit 2): General Surgery

Name of the course	Credit points	Responsible department	Attendance	Percentage of Achieved points
General Surgery	2 credit point	General Surgery department	Attendance of 20 hours	100%
	0.3		3 hours Thyroid gland (goiter, nodules, tumors).	15%
	0.3		3 hours Calcular & malignant obstructive jaundice. Gall bladder stones.	15%
	0.3		3 hours Hepatic cysts, abscess & tumors.	15%
	0.3		3 hours Diaphragmatic hernia. Intussusception. Complications of acute appendicitis.	15%
	0.3		3 hours Intestinal obstruction. Cancer esophagus. Cancer colon.	15%
	0.3		3 hours Benign breast lesions & breast cancer.	15%
	0.2		2 hours Varicocele. Hydrocele.	10%
Student signature			Principle coordinator signature	Head of the department signature



General surgery lecture

Date	Role	Title of lecture	Signature of Staff member

** Your role:-
A- Attendance
B- Active participation



Training in General surgery

Clinical training	Credit points	Responsible department	Attendance	Percentage of Achieved points
Clinical training in general surgery	5	General Surgery	4 weeks in general surgery: Training in only clinical picture and diagnosis of diseases.	100%
	2.5 CP		2 weeks Practice with clinical cases in the department of General Surgery and interpretation of their different related radiological investigation. - Log of 10 cases : <ul style="list-style-type: none"> ▪ Thyroid swelling. ▪ Obstructive Jaundice. ▪ Breast mass. ▪ Intestinal obstruction. ▪ Cancer esophagus. ▪ Cancer colon. ▪ Hepatic lesions. ▪ Acute appendicitis. ▪ Intussusception. ▪ Diaphragmatic hernia. ▪ Hydrocele & Varicocele. 	50%
	2.5CP		2 weeks Attendance in the outpatient clinic of surgery. Log of 10 cases as mentioned above.	50%
Student signature			Principle coordinator Signature	Head of the department signature



General surgery Clinical cases log

Diagnosis of case	Location	* Level of participation	Signature of supervisor

- * Level of participation
 A -Plan and carry out independently.
 B- Carry out
 C-Carry out under supervision



General surgery Clinical cases log

Diagnosis of case	Location	* Level of participation	Signature of supervisor

- * Level of participation:
- A -Plan and carry out independently.
 - B- Carry out
 - C-Carry out under supervision



Assiut University
Faculty of Medicine



Faculty of Medicine
Quality Assurance Unit

General surgery Clinical cases log

Diagnosis of case	Location	* Level of participation	Signature of supervisor

* Level of participation

A -Plan and carry out independently.

B- Carry out

C-Carry out under supervision



Assiut University
Faculty of Medicine



Faculty of Medicine
Quality Assurance Unit

General surgery Clinical cases log

Diagnosis of case	Location	* Level of participation	Signature of supervisor

* Level of participation

A -Plan and carry out independently.

B- Carry out

C-Carry out under supervision



Assiut University
Faculty of Medicine



Faculty of Medicine
Quality Assurance Unit

Course 5 (Unit 3): Pathology

Name of the course	Credit points	Responsible department	Attendance	Percentage of Achieved points
Pathology	2 credit point	Pathology department	Attendance of 20 hours	100%
	0.3		3 hours General Pathology of Tumors.	15%
	0.35		3.5 hours Pathologic Details of <i>Brain diseases</i> .	17.5%
	0.35		3.5 hours Pathologic Details of <i>Bone diseases</i> .	17.5%
	0.35		3.5 hours Pathologic Details of <i>Renal diseases</i> .	17.5%
	0.35		3.5 hours Pathologic Details of <i>GIT</i> .	17.5%
	0.3		3 hours Pathologic Details of <i>Cardiology</i> .	15%
Student signature			Principle coordinator signature	Head of the department signature



Pathology: Lectures

Date	Role	Title of lecture	Signature of Staff member

** Your role:-
A- Attendance
B- Active participation



Second part: Course 6 (Diagnostic radiology)

Requirements

- **Credit points:** 24 credit point for didactic (lectures, seminars, tutorial, conference) (12 credit points of them during year 2 and 12 during year 3) and 110 credit point for training (14 during year 1 and 96 in year 2, 3). Minimal rate of attendance 80% of training and didactic. Total points for seminar 1.5 CPS, for conference or workshop 0.9 CP, and for MCQ Exam 0.7 CP.

This course consist of:

1. Unit (Module) 1 Gastrointestinal tract
2. Unit (Module) 2 Genitourinary tract.
3. Unit (Module) 3 Neuroradiology, head and neck.
4. Unit (Module) 4 US
5. Unit (Module) 5 MSK system
6. Unit (module) 6 Chest and cardio-vascular system

Units' Titles' list	% from total Marks	Level (Year)	Core Credit points		
			Didactic	Training	Total
*Unit (Module) 1 Gastrointestinal tract	15%	1,2,3	3.6	16.5	20.1
*Unit (Module) 2 Genitourinary tract.	15%	1,2,3	3.6	16.5	20.1
*Unit (Module) 3 Neuroradiology, head and neck.	20%	1,2,3	4.8	22	26.8
*Unit (Module) 4 US	15%	1,2,3	3.6	16.5	20.1
*Unit (Module) 5 MSK system	15%	1,2,3	3.6	16.5	20.1
*Unit (module) 6 Chest and cardio-vascular system	20%	1,2,3	4.8	22	26.8
	100%		24	110	134



Year 1 (14 credit points for training in diagnostic radiology department)

Clinical training	Credit points	Responsible department	Attendance	Percentage of Achieved points
Clinical training in Radio diagnosis	14 CPS	Radiodiagnosis	Year 1	12.8% of the training in all units
Recording of at least 10% of required cases and procedure from the specialized course units	2 CPS		<ul style="list-style-type: none"> ➤ Attendance and/or Practice with clinical cases for ten days (6 hours/day) in X-ray reporting unit of the department including ➤ Procedures log as mentioned below 	14.3%
	2 CPS		<ul style="list-style-type: none"> ➤ Attendance and/or Practice with clinical cases for ten days (6 hours/day) in US unit including ➤ Procedures log as mentioned below 	14.3%
	2 CPS		<ul style="list-style-type: none"> ➤ Attendance and/or Practice with clinical cases for ten days (6 hours/day) in the Fluroscopy unit including ➤ Procedures log as mentioned below. 	14.3%
	2 CPS		<ul style="list-style-type: none"> ➤ Attendance and/or Practice with clinical cases for ten days (6 hours/day) in Pediatric radiology unit including ➤ Procedures log as mentioned below 	14.3%
	1 CP		<ul style="list-style-type: none"> ➤ Attendance and/or Practice with clinical cases for five days (6 hours/day) in the CT unit including ➤ Procedures log as mentioned below 	7.1%
	5 CPS		<ul style="list-style-type: none"> ➤ Night shift from 2pm to 8am at least twice / month for at 5 month 	35.7%
Student signature			Principle coordinator Signature	Head of the department signature



Assiut University
Faculty of Medicine



Faculty of Medicine
Quality Assurance Unit

X-ray Reporting Unit Clinical Rotation

Date	Location	Signature of supervisor



Assiut University
Faculty of Medicine



Faculty of Medicine
Quality Assurance Unit

US Unit Clinical Rotation

Date	Location	Signature of supervisor



Assiut University
Faculty of Medicine



Faculty of Medicine
Quality Assurance Unit

Fluoroscopy US Unit Clinical Rotation

Date	Location	Signature of supervisor



Assiut University
Faculty of Medicine



Faculty of Medicine
Quality Assurance Unit

Pediatric Radiology Department Clinical Rotation

Date	Location	Signature of supervisor



Assiut University
Faculty of Medicine



Faculty of Medicine
Quality Assurance Unit

CT Unit Clinical Rotation

Date	Location	Signature of supervisor



Assiut University
Faculty of Medicine



Faculty of Medicine
Quality Assurance Unit

Night Shift

Date	Signature of supervisor



Training during year 2

Clinical training	Credit points	Responsible department	Attendance	Percentage of Achieved points
Clinical training in Radio diagnosis	48	Radio diagnosis	Year 2	43.6% of the training in all units (Second part)
Radio diagnosis	7		<ul style="list-style-type: none"> ➤ Practice with clinical cases for 35 days (6 hours/day) in X-ray reporting unit of the department including ➤ Procedures log as mentioned below 	22.2%
	7		<ul style="list-style-type: none"> ➤ Practice with clinical cases for 35 days (6 hours/day) in US unit including ➤ Procedures log as mentioned below 	22.2%
	6		<ul style="list-style-type: none"> ➤ Practice with clinical cases for 30 days (6 hours/day) in Pediatric radiology department including ➤ Procedures log as mentioned below 	6.7%
	6		<ul style="list-style-type: none"> ➤ Practice with clinical cases for 30 days (6 hours/day) in Fluoroscopy unit including ➤ Procedures log as mentioned below 	11.1%
	6		<ul style="list-style-type: none"> ➤ Practice with clinical cases for 30 days (6 hours/day) in CT unit including ➤ Procedures log as mentioned below 	11.1%
	5		<ul style="list-style-type: none"> ➤ Practice with clinical cases for 25 days (6 hours/day) in MRI unit including ➤ Procedures log as mentioned below 	6.7%
	8		<ul style="list-style-type: none"> ➤ Night shift from 2pm to 8 am at least twice /month for 8 months 	13.3%
	3		<ul style="list-style-type: none"> ➤ formative assessment (mini clinical exam) 	6.7%
Student signature			Principle coordinator Signature	Head of the department signature



Assiut University
Faculty of Medicine



Faculty of Medicine
Quality Assurance Unit

X-ray Reporting Unit Clinical Rotation

Date	Location	Signature of supervisor



Assiut University
Faculty of Medicine



Faculty of Medicine
Quality Assurance Unit

X-ray Reporting Unit Clinical Rotation

Date	Location	Signature of supervisor



Assiut University
Faculty of Medicine



Faculty of Medicine
Quality Assurance Unit

US Unit Clinical Rotation

Date	Location	Signature of supervisor



Assiut University
Faculty of Medicine



Faculty of Medicine
Quality Assurance Unit

US Unit Clinical Rotation

Date	Location	Signature of supervisor



Assiut University
Faculty of Medicine



Faculty of Medicine
Quality Assurance Unit

Pediatric Radiology Department Clinical Rotation

Date	Location	Signature of supervisor



Assiut University
Faculty of Medicine



Faculty of Medicine
Quality Assurance Unit

Pediatric Radiology Department Clinical Rotation

Date	Location	Signature of supervisor



Assiut University
Faculty of Medicine



Faculty of Medicine
Quality Assurance Unit

Fluoroscopy Unit Clinical Rotation

Date	Location	Signature of supervisor



Assiut University
Faculty of Medicine



Faculty of Medicine
Quality Assurance Unit

Fluoroscopy Unit Clinical Rotation

Date	Location	Signature of supervisor



CT Unit Clinical Rotation

Date	Location	Signature of supervisor



Assiut University
Faculty of Medicine



Faculty of Medicine
Quality Assurance Unit

CT Unit Clinical Rotation

Date	Location	Signature of supervisor



Assiut University
Faculty of Medicine



Faculty of Medicine
Quality Assurance Unit

MRI Unit Clinical Rotation

Date	Location	Signature of supervisor



Assiut University
Faculty of Medicine



Faculty of Medicine
Quality Assurance Unit

MRI Unit Clinical Rotation

Date	Location	Signature of supervisor



**Assiut University
Faculty of Medicine**



**Faculty of Medicine
Quality Assurance Unit**

Night Shift

Date	Signature of supervisor



Training during year 3

Clinical training	Credit points	Responsible department	Attendance	Percentage of Achieved points
Clinical training in Radiodiagnosis	48 CPS	Radiodiagnosis	Year 3	43.6% of the training in all units (Second part)
Radiodiagnosis	9		<ul style="list-style-type: none"> ➤ Practice with clinical cases for 45 days (6 hours/day) in CT unit of the department including ➤ Procedures log as mentioned below 	18.8%
	9		<ul style="list-style-type: none"> ➤ Practice with clinical cases for 45 days (6 hours/day) in MRI unit including ➤ Procedures log as mentioned below 	18.8%
	4		<ul style="list-style-type: none"> ➤ Practice with clinical cases for 20 days (6 hours/day) in US unit including ➤ Procedures log as mentioned below 	8.3%
	4		<ul style="list-style-type: none"> ➤ Practice with clinical cases for 20 days (6 hours/day) in Pediatric radiology department including ➤ Procedures log as mentioned below 	8.3%
	4		<ul style="list-style-type: none"> ➤ Practice with clinical cases for 20 days (6 hours/day) in Fluoroscopy unit including ➤ Procedures log as mentioned below 	8.3%
	4		<ul style="list-style-type: none"> ➤ Practice with clinical cases for 20 days (6 hours/day) in X-ray reporting unit including ➤ Procedures log as mentioned below 	8.3%
	5		<ul style="list-style-type: none"> ➤ Practice with clinical cases for 25 days (6 hours/day) in Doppler US unit including ➤ Procedures log as mentioned below 	10.4%
	6		<ul style="list-style-type: none"> ➤ Night shift from 2pm to 8 am at least twice/month for 6 months 	12.5%
	3		<ul style="list-style-type: none"> ➤ formative assessment (mini clinical exam) 	6.3%
Student signature			Principle coordinator Signature	Head of the department signature



Assiut University
Faculty of Medicine



Faculty of Medicine
Quality Assurance Unit

CT Unit Clinical Rotation

Date	Location	Signature of supervisor



Assiut University
Faculty of Medicine



Faculty of Medicine
Quality Assurance Unit

CT Unit Clinical Rotation

Date	Location	Signature of supervisor



Assiut University
Faculty of Medicine



Faculty of Medicine
Quality Assurance Unit

CT Unit Clinical Rotation

Date	Location	Signature of supervisor



MRI Unit Clinical Rotation

Date	Location	Signature of supervisor



Assiut University
Faculty of Medicine



Faculty of Medicine
Quality Assurance Unit

MRI Unit Clinical Rotation

Date	Location	Signature of supervisor



Assiut University
Faculty of Medicine



Faculty of Medicine
Quality Assurance Unit

MRI Unit Clinical Rotation

Date	Location	Signature of supervisor



Assiut University
Faculty of Medicine



Faculty of Medicine
Quality Assurance Unit

US Unit Clinical Rotation

Date	Location	Signature of supervisor



Assiut University
Faculty of Medicine



Faculty of Medicine
Quality Assurance Unit

Pediatric Radiology department Clinical Rotation

Date	Location	Signature of supervisor



Assiut University
Faculty of Medicine



Faculty of Medicine
Quality Assurance Unit

Fluoroscopy Unit Clinical Rotation

Date	Location	Signature of supervisor



Assiut University
Faculty of Medicine



Faculty of Medicine
Quality Assurance Unit

X ray Reporting Unit Clinical Rotation

Date	Location	Signature of supervisor



Assiut University
Faculty of Medicine



Faculty of Medicine
Quality Assurance Unit

Doppler US Unit Clinical Rotation

Date	Location	Signature of supervisor



Assiut University
Faculty of Medicine



Faculty of Medicine
Quality Assurance Unit

Doppler US Unit Clinical Rotation

Date	Location	Signature of supervisor



Assiut University
Faculty of Medicine



Faculty of Medicine
Quality Assurance Unit

Night Shift

Date	Signature of supervisor

Module: gastrointestinal tract

- **Credit points:** 3.6 credit point for didactic (lectures, seminars, tutorial) and 16.5 credit point for training.





Name of the course	Credit points	Responsible department	Attendance	Percentage of Achieved points
Gastrointestinal tract	3.6 CP	Department of Diagnostic radiology	Attendance of 36 hours	100%
Year 2 & 3	0.4 CP		Attendance of 4 hours Imaging findings in diseases of the pharynx and esophagus.	11.1%
	0.5 CP		Attendance of 5 hours Imaging findings in diseases of the stomach, small bowel.	13.9%
	0.5 CP		Attendance of 5 hours Imaging findings in diseases of the colon and appendix.	13.9%
	0.3 CP		Attendance of 3 hours Vascular lesions.	8.3%
	0.4 CP		Attendance of 4 hours Hepatic lesions.	11.1%
	0.3 CP		Attendance of 3 hours Pancreatic lesion.	8.3%
	0.4 CP		Attendance of 4 hours Systemic diseases and GIT manifestation.	11.1%
	0.3 CP		Attendance of 3 hours Peritoneum and retro-peritoneum.	8.3%
Year 2 and/or Year 3	0.3 CP		Seminar Attendance of 80% of seminar Presentation of at least one time in seminar	8.3%
	0.1 CP		Conference or workshop	2.85%
	0.1 CP		MCQ EXAM	2.85%
Student signature			Principle coordinator Signature	Head of the department signature



Assiut University
Faculty of Medicine



Faculty of Medicine
Quality Assurance Unit

Academic activates

Lecture, journal club, seminar, conference, workshop

Activity	Your role **	Date	Signature of supervisor

** Your role:-
A- Attendance
B- Organization
C- Presentation



Assiut University
Faculty of Medicine



Faculty of Medicine
Quality Assurance Unit

Activity	Your role **	Date	Signature of supervisor

** Your role:-

- A- Attendance
- B- Organization
- C- Presentation



Module: gastrointestinal tract
Procedures log book

Training on gastrointestinal tract will be achieved during rotation between the following units { X-ray, US, Fluoroscopy, CT, MRI & Angiography } during year (1-3) and during night shift

Procedure
Conventional x-ray.
Protocols & Techniques of fluoroscopy cases.
Protocols of CT, multi-slice CT examinations.
Protocols of MRI examination of the GIT
Fistulogram: CT & MRI
Transtubal cholangiogram
Percutaneous transhepatic cholangiography (PTC)
External biliary drainage
Mesenteric angiography



Assiut University
Faculty of Medicine



Faculty of Medicine
Quality Assurance Unit

NO.	Procedure	Level of competency*	Location	Signature

* Level of competency
 A- Independent performance
 B- Performance under supervision
 C- Observed



**Assiut University
Faculty of Medicine**



**Faculty of Medicine
Quality Assurance Unit**

Reporting of: Gastrointestinal tract

	Plain film cases	
Diagnosis	Supervisor opinion	Supervisor signature



Assiut University
Faculty of Medicine



Faculty of Medicine
Quality Assurance Unit

Reporting of: Gastrointestinal tract

	Contrast studies cases	
Diagnosis	Supervisor opinion	Supervisor signature



Assiut University
Faculty of Medicine



Faculty of Medicine
Quality Assurance Unit

Reporting of: Gastrointestinal tract

	CT cases	
Diagnosis	Supervisor opinion	Supervisor signature



Assiut University
Faculty of Medicine



Faculty of Medicine
Quality Assurance Unit

Reporting of: Gastrointestinal tract

	MRI cases	
Diagnosis	Supervisor opinion	Supervisor signature

Module: genitourinary tract

- **Credit points:** 3.6 credit point for didactic (lectures, seminars, tutorial) and 16.5 credit point for training.





Name of the course	Credit points	Responsible department	Attendance	Percentage of Achieved points
Genitourinary system	3.6 CP	Department of Diagnostic radiology	Attendance of 36 hours	100%
Year 2& 3	0.4 CP		Attendance of 4 hours	11.1%
	0.4 CP		Patho-physiology of GU diseases after contrast administration.	11.1%
			Attendance of 4 hours	11.1%
	0.5 CP		Congenital anomalies of GU tract	13.9%
			Attendance of 5 hours	13.9%
	0.4 CP		GU tract neoplasm in different imaging modalities.	11.1%
			Attendance of 4 hours	11.1%
	0.5CP		Genitourinary differential diagnosis.	13.9%
Attendance of 5 hours		13.9%		
0.4 CP	Interpretation, identification and management of different GU diseases with imaging.	11.1%		
	Attendance of 4 hours	11.1%		
0.4 CP	Imaging of GU trauma.	11.1%		
	Attendance of 4 hours	11.1%		
0.3 CP	Year 2 and / or year 3		Seminar	8.3%
			Attendance of 80% of seminar	
0.2 CP			Presentation of at least one time in seminar	
			Conference or workshop	5.6%
0.1 CP			MCQ EXAM	2.8%
Student signature			Principle coordinator signature	Head of the department signature



Academic activities

Lecture, journal club, seminar, conference, workshop

Activity	Your role **	Date	Signature of supervisor

** Your role:-
A- Attendance
B- Organization
C- Presentation



Assiut University
Faculty of Medicine



Faculty of Medicine
Quality Assurance Unit

Activity	Your role **	Date	Signature of supervisor

** Your role:-

- A- Attendance
- B- Organization
- C- Presentation



Training on Genitourinary system will be achieved during rotation between the following units {X-ray, US, Fluoroscopy, CT, MRI & Angiography} during year (1-3) and during night shift.

Procedures log book
List of requirements

Procedure
Conventional X-ray.
Protocols & Techniques of fluoroscopy cases.
Protocols of CT & multi-slice CT , MRI examination.
Penile Duplex examination & cavernosography.
Renal angiography
-Percutaneous needle biopsy and abscess drainage.



Assiut University
Faculty of Medicine



Faculty of Medicine
Quality Assurance Unit

Reporting of: Genitourinary tract

	Plain film	
Diagnosis	Supervisor opinion	Supervisor signature



Assiut University
Faculty of Medicine



Faculty of Medicine
Quality Assurance Unit

Reporting of: Genitourinary tract

	Contrast studies cases	
Diagnosis	Supervisor opinion	Supervisor signature



**Assiut University
Faculty of Medicine**



**Faculty of Medicine
Quality Assurance Unit**

Reporting of: Genitourinary tract

	CT cases	
Diagnosis	Supervisor opinion	Supervisor signature



**Assiut University
Faculty of Medicine**



**Faculty of Medicine
Quality Assurance Unit**

Reporting of: Genitourinary tract

	MRI cases	
Diagnosis	Supervisor opinion	Supervisor signature

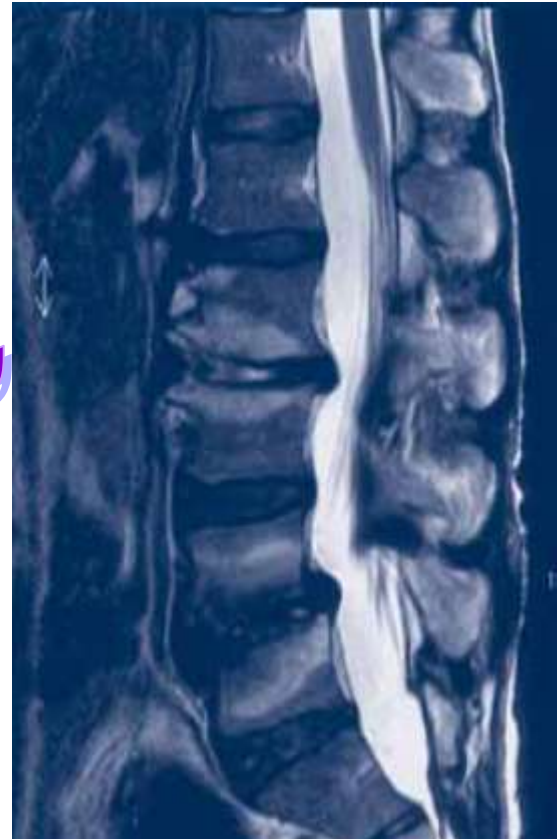


Assiut University
Faculty of Medicine



Faculty of Medicine
Quality Assurance Unit

Module: neuroradiology, head and neck



- **Credit points:** 4.8 credit point for didactic (lectures, seminars, tutorial) and 22 credit point for training.



Name of the course	Credit points	Responsible department	Attendance	Percentage of Achieved points
Neuroradiology, Head and neck	4.8 CP	Department of Diagnostic radiology	Attendance of 48 hours	100%
Year 2 & 3	0.6 CP		Attendance of 6 hours *Congenital malformation of the brain. *Neurocutaneous syndromes.	12.5%
	0.8 CP		Attendance of 8 hours *Brain tumors & tumors like lesions.	16.7%
	0.6 CP		Attendance of 6 hours *Intra-cranial hemorrhage and stroke. *Cranio-cerebral trauma.	12.5%
	0.8 CP		Attendance of 8 hours *Congenital anomalies, neoplastic and non-neoplastic lesions of the spine.	16.7%
	0.5 CP		Attendance of 5 hours *Brain infection.	10.4%
	0.5 CP		Attendance of 5 hours *Lesions of the PNS, orbit and petrous.	10.4%
	0.4 CP		Attendance of 4 hours *Neck lesions	8.3%
	Year 2 and / or Year 3		0.3 CP	
0.2 CP		Conference or workshop	4.2%	
0.1 CP		MCQ EXAM	2.1%	
Student signature			Principle coordinator Signature	Head of the department signature



Academic activates

Lecture, journal club, seminar, conference, workshop

Activity	Your role **	Date	Signature of supervisor

** Your role:-
A- Attendance
B- Organization
C- Presentation



**Assiut University
Faculty of Medicine**



**Faculty of Medicine
Quality Assurance Unit**

Activity	Your role **	Date	Signature of supervisor

** Your role:-
A- Attendance
B- Organization
C- Presentation



Training on Neuroradiology and head and neck will be achieved during rotation between the following units {X-ray, US, Duplex US, CT, MRI & Angiography} during year (1-3) and during night shift.

Procedures log book
List of requirements

Procedure
Radiographic positioning of skull & spine.
Protocols of CT & multi-slice & CT-angiography examination
Protocols of MRI examination
Duplex US for carotid vessels.
-Cerebral angiography



**Assiut University
Faculty of Medicine**



**Faculty of Medicine
Quality Assurance Unit**

NO.	Procedure	Level of competency*	Location	Signature

* Level of competency
A- Independent performance
B-performed under supervision
C-observed



Assiut University
Faculty of Medicine



Faculty of Medicine
Quality Assurance Unit

Reporting of: Neuro-radiology

	CT: brain	
Diagnosis	Supervisor opinion	Supervisor signature



Assiut University
Faculty of Medicine



Faculty of Medicine
Quality Assurance Unit

Reporting of: Neuro-radiology

CT: Spine		
Diagnosis	Supervisor opinion	Supervisor signature



Assiut University
Faculty of Medicine



Faculty of Medicine
Quality Assurance Unit

Reporting of: Neuro-radiology

	MRI: Brain	
Diagnosis	Supervisor opinion	Supervisor signature



**Assiut University
Faculty of Medicine**



**Faculty of Medicine
Quality Assurance Unit**

Reporting of: Neuro-radiology

	MRI: Spine	
Diagnosis	Supervisor opinion	Supervisor signature



Assiut University
Faculty of Medicine



Faculty of Medicine
Quality Assurance Unit

Reporting of: Neuro-radiology

	Neck cases	
Diagnosis	Supervisor opinion	Supervisor signature



Assiut University
Faculty of Medicine



Faculty of Medicine
Quality Assurance Unit

Reporting of: Neuro-radiology

	Head (sinuses/ orbits/ temporal bone/ mandible) cases	
Diagnosis	Supervisor opinion	Supervisor signature



Assiut University
Faculty of Medicine



Faculty of Medicine
Quality Assurance Unit

Reporting of: Neuro-radiology

	Head cases	
Diagnosis	Supervisor opinion	Supervisor signature

Module: Ultrasound

- **Credit points:** 3.6 credit point for didactic (lectures, seminars, tutorial) and 16.5 credit point for training.





Assiut University
Faculty of Medicine



Faculty of Medicine
Quality Assurance Unit

Name of the course	Credit points	Responsible department	Attendance	Percentage of Achieved points
Ultrasound	3.6 CP	Department of Diagnostic radiology	Attendance of 36 hours	100%
Year 2 & 3	0.5 CP		Attendance of 5 hours Principals of US & Sound wave properties.	13.9%
	0.5 CP		Attendance of 5 hours -Transducer components. -Doppler phenomenon.	13.9%
	0.7 CP		Attendance of 7 hours -Normal basic cross sectional ultrasound anatomy.	19.4%
	0.5 CP		Attendance of 5 hours -Image processing and display. -Bio-effects and safety.	13.9%
	0.6 CP		Attendance of 6 hours -Imaging applications & artifacts. -Specific applications for US. (Neck, Breast, Cheat, obstetric)	16.7%
	0.6 CP		Attendance of 6 hours -Techniques for ultrasound guided aspiration of fluid collection and biopsy.	16.7%
Year 2 And /or Year 3	0.2 CP		MCQ EXAM	5.5%
Student signature			Principle coordinator Signature	Head of the department signature



**Assiut University
Faculty of Medicine**



**Faculty of Medicine
Quality Assurance Unit**

Academic activates

Lecture, journal club, seminar, conference, workshop

Activity	Your role **	Date	Signature of supervisor

** Your role:-
 A- Attendance
 B- Organization
 C- Presentation



**Assiut University
Faculty of Medicine**



**Faculty of Medicine
Quality Assurance Unit**

Activity	Your role **	Date	Signature of supervisor

** Your role:-

- A- Attendance
- B- Organization
- C- Presentation



Training on Ultrasound and Doppler US will be achieved during rotations during year (1-3) and during night shift.

Procedures log book

Procedure
Abdominal US.
Pelvic US.
Obstetric US.
-Small parts US: thyroid, breast and scrotum. -Duplex US.
Ultrasound guided aspiration and biopsy



**Assiut University
Faculty of Medicine**



**Faculty of Medicine
Quality Assurance Unit**

NO.	Procedure	Level of competency*	Location	Signature

* Level of competency
 A- Independent performance
 B-performed under supervision
 C-observed



**Reporting of: Ultrasound
Abdominal cases**

Diagnosis	Supervisor opinion	Supervisor signature



Assiut University
Faculty of Medicine



Faculty of Medicine
Quality Assurance Unit

Reporting of: Ultrasound Pelvic cases

Diagnosis	Supervisor opinion	Supervisor signature



Assiut University
Faculty of Medicine



Faculty of Medicine
Quality Assurance Unit

Reporting of: Ultrasound Obstetric cases

Diagnosis	Supervisor opinion	Supervisor signature



Assiut University
Faculty of Medicine



Faculty of Medicine
Quality Assurance Unit

Reporting of: Ultrasound Small parts cases

Diagnosis	Supervisor opinion	Supervisor signature



Assiut University
Faculty of Medicine



Faculty of Medicine
Quality Assurance Unit

Reporting of: Ultrasound

Ultrasound guided aspiration and biopsy cases

Diagnosis	Supervisor opinion	Supervisor signature

Module: *musculoskeletal* system

- **Credit points:** 3.6 credit point for didactic (lectures, seminars, tutorial) and 16.5 credit point for training.





Assiut University
Faculty of Medicine



Faculty of Medicine
Quality Assurance Unit

Name of the course	Credit points	Responsible department	Attendance	Percentage of Achieved points
Musculoskeletal system	3.6 CP	Department of Diagnostic radiology	Attendance of 36 hours	100%
Year 2 & 3	0.4 CP		Attendance of 4 hours Common dysplasia and congenital conditions.	11.1%
	0.6 CP		Attendance of 6 hours Benign and malignant bone tumors.	16.7%
	0.3 CP		Attendance of 3 hours Assessment of a solitary bony lesion.	8.3%
	0.3 CP		Attendance of 3 hours Articular disease.	8.3%
	0.4 CP		Attendance of 4 hours Infectious lesions.	11.1%
	0.3 CP		Attendance of 3 hours Soft tissue lesions.	8.3%
	0.4 CP		Attendance of 4 hours -Hematopoietic and storage disease. -Osteonecrosis.	11.1%
	0.3 CP		Attendance of 3 hours Endocrinal lesions.	8.3%
	Year 2 and / or year 3		0.3 CP	
0.2 CP		Conference or workshop	5.65%	
0.1 CP		MCQ EXAM	2.85%	
Student signature			Principle coordinator Signature	Head of the department signature



Academic activates

Lecture, journal club, seminar, conference, workshop

Activity	Your role **	Date	Signature of supervisor

** Your role:-
A- Attendance
B- Organization
C- Presentation



Assiut University
Faculty of Medicine



Faculty of Medicine
Quality Assurance Unit

Activity	Your role **	Date	Signature of supervisor

** Your role:-
A- Attendance
B- Organization
C- Presentation



Training on MSK will be achieved during rotation between the following units {X-ray, US, CT & MRI} during year (1-3) and during night shift.

Procedures log book

Procedure
-Radiographic positioning of axial & appendicular skeleton.
-Protocols of CT& multi-slice CT in MSK and soft tissue examinations.
Protocols of MRI in MSK and soft tissue examinations.
Bone density measurements.
Percutaneous biopsy.



**Assiut University
Faculty of Medicine**



**Faculty of Medicine
Quality Assurance Unit**

NO.	Procedure	Level of competency*	Location	Signature

* Level of competency
 A- Independent performance
 B-performed under supervision
 C-observed



Assiut University
Faculty of Medicine



Faculty of Medicine
Quality Assurance Unit

Reporting of: MSK system Plain film cases

Diagnosis	Supervisor opinion	Supervisor signature



**Assiut University
Faculty of Medicine**



**Faculty of Medicine
Quality Assurance Unit**

Reporting of: MSK system CT cases

Diagnosis	Supervisor opinion	Supervisor signature



**Assiut University
Faculty of Medicine**



**Faculty of Medicine
Quality Assurance Unit**

Reporting of: MSK system CT cases

Diagnosis	Supervisor opinion	Supervisor signature



Assiut University
Faculty of Medicine



Faculty of Medicine
Quality Assurance Unit

Reporting of: MSK system MRI cases

Diagnosis	Supervisor opinion	Supervisor signature



Assiut University
Faculty of Medicine



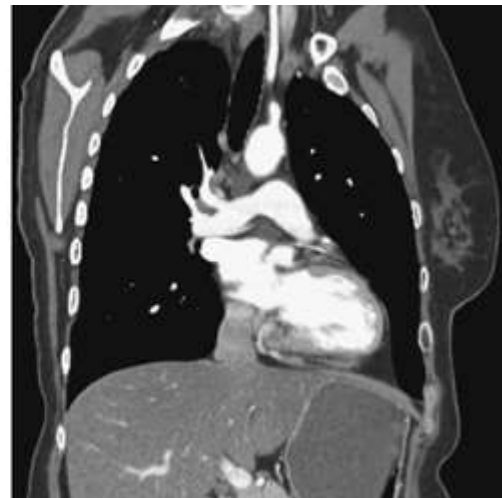
Faculty of Medicine
Quality Assurance Unit

Reporting of: MSK system
MRI cases

Diagnosis	Supervisor opinion	Supervisor signature

Module: chest and cardiovascular system

- **Credit points: 4.8** credit point for didactic (lectures, seminars, tutorial) and 22 credit point for training.





Name of the course	Credit points	Responsible department	Attendance	Percentage of Achieved points
Chest and cardiovascular system	4.8 CP	Department of Diagnostic radiology	Attendance of 48 hours	100%
Year 2 & 3	0.4 CP		Attendance of 4 hours	8.3%
	0.4 CP		Different signs in chest radiology.	8.3%
			Attendance of 4 hours	
	0.6 CP		Pulmonary vasculature	12.5%
			Attendance of 6 hours	
	0.6 CP		Pulmonary tumors and mediastinum.	12.5%
			Attendance of 6 hours	
	0.5 CP		Interstitial lung disease (ILD).	10.4%
			Attendance of 5 hours	
	0.7 CP		Pulmonary infection	14.6%
Attendance of 7 hours				
0.5 CP	Cardiovascular system.	10.4%		
	Attendance of 5 hours			
0.5 CP	Chest wall, pleural and diaphragmatic lesions.	10.4%		
	Attendance of 5 hours			
Year 2 and/or Year 3	0.3 CP	Chest trauma.	Seminar	6.3%
		Attendance of 80% of seminar		
		Conference or workshop	4.2%	
Student signature			MCQ EXAM	2.1%
			Principle coordinator Signature	Head of the department signature



Assiut University
Faculty of Medicine



Faculty of Medicine
Quality Assurance Unit

Academic activates

Lecture, journal club, seminar, conference, workshop

Activity	Your role **	Date	Signature of supervisor

** Your role:-
A- Attendance
B- Organization
C- Presentation



Assiut University
Faculty of Medicine



Faculty of Medicine
Quality Assurance Unit

Activity	Your role **	Date	Signature of supervisor

** Your role:-

- A- Attendance
- B- Organization
- C- Presentation



Training on Chest and cardiovascular system will be achieved during rotation between the following units { X ray, US, CT, MRI & Angiography } during year (1-3) and during night shift

Procedures log book

Procedure
-Radiographic positioning of chest.
-Protocols of CT & multi-slice CT& CT angiography examinations.
-Angiography
-Phlebography
-CT guided needle lung biopsy



**Assiut University
Faculty of Medicine**



**Faculty of Medicine
Quality Assurance Unit**

NO.	Procedure	Level of competency*	Location	Signature

* Level of competency
A- Independent performance
B-performed under supervision
C-observed



Assiut University
Faculty of Medicine



Faculty of Medicine
Quality Assurance Unit

Reporting of: chest and cardiovascular systems

Plain film cases

Diagnosis	Supervisor opinion	Supervisor signature



Assiut University
Faculty of Medicine



Faculty of Medicine
Quality Assurance Unit

Reporting of: chest and cardiovascular system CT cases

Diagnosis	Supervisor opinion	Supervisor signature



Assiut University
Faculty of Medicine



Faculty of Medicine
Quality Assurance Unit

Reporting of: chest and cardiovascular system CT angiography

Diagnosis	Supervisor opinion	Supervisor signature



Assiut University
Faculty of Medicine



Faculty of Medicine
Quality Assurance Unit

**Reporting of: chest and cardiovascular system
Angiographic cases**

Diagnosis	Supervisor opinion	Supervisor signature



**Assiut University
Faculty of Medicine**



**Faculty of Medicine
Quality Assurance Unit**

Postgraduate student's program Rotation in training assessment

*** Name:**

*** Period of training From: To:**

*** Site:**

*Rotation

General skills	could not judge (0)	strongly disagree(1)	(2) (3)		(4) (5)		(6)	strongly agree (7)
Perform practice-based improvement activities using a systematic methodology (share in audits and risk management activities and use logbooks).								
Appraises evidence from scientific studies.								
Conduct epidemiological studies and surveys.								
Perform data management including data entry and analysis and using information technology to manage information, access on-line medical information; and support their own education.								



General skills	could not judge (0)	strongly disagree(1)	↔		↔		(6)	strongly agree (7)
			(2)	(3)	(4)	(5)		
Facilitate learning of students other health care professionals including their evaluation and assessment.								
Maintain therapeutic and ethically sound relationship with patients.								
Elicit information using effective nonverbal, explanatory, questioning, and writing skills.								
Provide information using effective nonverbal, explanatory, questioning, and writing skills.								
Work effectively with others as a member of a health care team or other professional group.								
Demonstrate respect, compassion, and integrity; a responsiveness to the needs of patients and society.								
Demonstrate a commitment to ethical principles including provision or withholding of clinical care, confidentiality of patient information, informed consent, business practices.								



General skills	could not judge (0)	strongly disagree(1)	↩		↩		strongly agree (7)
			(2)	(3)	(4)	(5)	
Demonstrate sensitivity and responsiveness to patients' culture, age, gender, and disabilities.							
Work effectively in relevant health care delivery settings and systems including good administrative and time management							
Practice cost-effective health care and resource allocation that does not compromise quality of care.							
Assist patients in dealing with system complexities.							



Assiut University
Faculty of Medicine



Faculty of Medicine
Quality Assurance Unit

Elective Course 1

Requirements

● **Credit points:** 2 credit point.

- Minimal rate of attendance 80% of lectures and 80% of training
- Medical statistics.
- Evidence based medicine.
- Medicolegal Aspects and Ethics in Medical Practice and Scientific Research
- Quality assurance of medical education.
- Quality assurance of clinical practice.
- Hospital management



Name of the elective course: -----

Elective Course 1 Lectures

Date	Attendance	Topic	Signature



MCQ Assessments 0.7 CP and mini clinical exams 6 CP

- Twice per year in the specialized course (during year 2 and year 3) or at least 3 during the whole period

Exam	Date	grade *	Signature of Head of the department	Credit point

***Degree**

- A- Excellent
- B- Very good
- C- Good
- D- Pass



Declaration

Course Structure Mirror	Responsible (Course) Coordinator Name:	Signature	Date
First Part			
Course 1			
Course 2			
Course 3			
Course 4			
Second Part			
Course 5 Diagnostic radiology			
Unit (Module) 1			
Unit (Module) 2			
Unit (Module) 3			
Unit (Module) 4			
Unit (Module) 5			
Unit (Module) 6			
- Elective Course (s) Certificate (s) Dates:			
- Master Degree Thesis Acceptance Date:			
- Fulfillment of required credit points prior to final examination			
Diagnostic radiology M Sc Degree Principle Coordinator:			
Date approved by Diagnostic radiology Department Council:			

يعتمد
رئيس القسم
أ.د.