

# Master Degree of Pathology Log Book



" كراسية الأنشطة "

اللازمة لحصول المتدرب على درجة الماجستير في الباثولوجيا

2022/2023



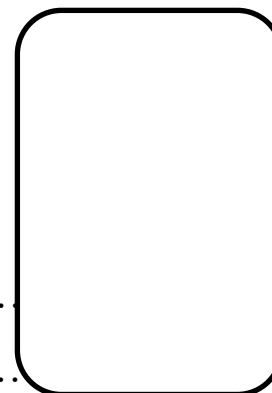
## Contents

NO	SUBJECT	PAGE
1	Personal data	3
2	Instructions to the use of logbook	4
3	Program aims and curriculum structure	5-6
4	<u>Course 1</u> Histology (First Part)	7
5	Course 2 Speciality Course Pathology Unit 1 General Pathology Unit 2 :GIT and Liver pathology Unit 3 Pathology of female genital organs and breast Unit 4 Genitourinary Pathology Unit 5 Head and Neck Pathology Unit 6 Pathology of intrathoracic organs Unit 7 Haematopoietic and lymphatic Pathology Unit 8 Soft tissue and Bone Pathology Unit 9 Neuropathology Unit 10 Endocrine organs pathology Unit 11 DermatoPathology Unit 12 Cytology Unit 13 Immunohistochemistry	22
6	Elective Course	158
7	Academic Activities	161
8	Formative assessment	165
9	Master Degree Thesis Pathway	166
10	Declaration	166



Personal Data

Name.....  
Date of birth.....  
Address.....  
Place of work.....  
Mobile phone(s).....  
E mail.....



Name of hospital	Period of work	Hospital director Signature

Academic Information

MBBCh...../...../..... University  
Grade .....  
Grade of Internal Medicine course on graduation .....  
Others...../...../..... University  
...../...../..... University



### **\* Aim of the activities book**

To provide one source of evidence for the assessment committee that you attained the desired level of competency required to gain the award.

In this book you will document all clinical, academic and other experiences and skills you attained during your training.

### **Sections of the book For each course**

You should fill the following sections:-

#### **1-Pathologic cases log**

You will first find list with all required specimens in the concerned course and the minimum number of cases you must get exposed to and level of participation you should achieve for each type of cases.

You should record all cases in the course and each case should be signed by your trainer.

## **2- Case presentation log**

Record the cases related to the course that you have presented in a seminar of the activity.

## **3- Procedures log**

- 1- You will find a list for required procedure and level of desired performance you should achieve at the end of training.
- 2- You will find empty tables to write down the procedure, your level of participation and date and signature of supervisor

## **4- Rotation / attendance proof**

You should have evidence of achievement the required training hours within each course

*For the whole program fill the following sections*

### 1- Academic activities

A- Document all academic activities e.g. lecture, journal clubs, workshops, conference, services attended. This documentation should include the level of participation " attendance, preparation, presentation,....."

### 2- Academic achievements

A- Document all outcomes you achieved in the field of:-

- Audit participation
- Research "clinical trial" participation.
- Evidence- based medicine "generation of guidelines" protocol

### 3- Formative assessment log

This document all types of formative assessment attended e.g.:-

- Mini clinical examination
- Quizes

## **- Program aims**

- 1- Develop a critical evaluation of techniques used in cellular pathology and cytology for the diagnosis and monitoring of diseases and acquire the ability to provide specialist opinion in pathology and competency in diagnosis of histopathology.
- 2- Demonstrate a core understanding of concepts associated with the scientific basis of human pathology.
- 3- Develop within the context of Biomedical Sciences, a comprehensive understanding of communication, research and scientific methods.
- 4- Enable candidates to start professional careers as specialists in Egypt but recognized abroad.
- 5- To introduce candidates to the basics of scientific medical research.
- 6- Acquire the ability to communicate effectively in verbal and written form with clinical colleagues, administrative personnel, and technical personnel and demonstrate respectful and caring behavior when interacting with patients and their families.
- 7- Acquire life-long habits of reading, literature searches, consultation with colleagues, attendance at scientific meetings, and the presentation of scientific work that is essential for continuing professional development.



## Curriculum Structure:

### Program Time Table

Duration of program 3 years maximally 5 years divided into

- Part 1: 12 months

Program-related basic science course and ILOs+ elective courses

Students are allowed to set the exams of these courses after 12 months from applying to the M Sc degree.

- Thesis

For the M Sc thesis;

MSc thesis subject should be officially registered within 6 months from application to the MSc degree,

Discussion and acceptance of the thesis should not be set before 12 months from registering the M Sc subject;

It could be discussed and accepted before passing the second part of examination)

- Part 2: 24 months

Program –related speciality science courses and ILOs

Students are not allowed to set the exams of these courses before 3 years from applying to the MSc degree.

***n.b. Fulfillment of the requirements in each course as described in the template and registered in the log book is a pre-request for candidates to be assessed and undertake part 1 and part 2 examinations.***

# First Part

## Course 1

## Histology

### Requirements:

8 credit points for didactic

10 credit points for training

Minimal rate of attendance is 80%



**Didactic: 8 credit point**

Name of the course	Credit points	Responsible department	Attendance	Percentage of Achieved points
Histology	1	Department of Histology	10 hours Vascular and lymphoid	12.5%
	1		10 hours Skin and Endocrine	12.5%
	1		10 hours Digestive	12.5%
	1		10 hours Urinary	12.5%
	1		10 hours Respiratory	12.5%
	1		10 hours Male reproductive	12.5%
	1		10 hours Female Reproductive and breast	12.5%
	1		10 hours CNS, Eye, ear	12.5%
Student signature			Principle coordinator Signature	Head of the department signature

### Training: 8 credit point

training	Credit points	Responsible department	Attendance	Percentage of Achieved points
Training in Histology	1	Department of Histology	1 week Vascular and lymphoid	10%
	1		1 week Skin and Endocrine	10%
	1		1 week Digestive	10%
	1		1 week Urinary	10%
	1		1 week Respiratory	10%
	1		1 week Male reproductive	10%
	1		1 week Female Reproductive and breast	10%
	1		1 week CNS, Eye, ear	10%
	2		2 week Microtechniques Histochemistry and cytochemistry	20%
Student signature			Principle coordinator Signature	Head of the department signature

## Rotation / attendance proof

### الأماكن التي تدرب بها

الفترة من – إلى	أسم المعامل التي تدرب بها	توقيع رئيس القسم	توقيع مدير المعمل

## A –Slide examination log

### Requirements

Examination by LM and identification of the following organs and systems:

#### Vascular system

- artery
- vein

#### Lymphoid tissue

- lymph nodes
- spleen

#### Endocrine glands :

- thyroid
- parathyroid
- adrenal
- pituitary

#### Skin :

- Types of skin(Thin&Thick)
- Skin Appendages

#### Digestive system :

- Tongue – lip
- Salivary glands
- Oesophagus
- Stomach (Cardiac, fundic and pyloric regions)



- The structure of small intestine
- The structure of large intestine
- Structure and histophysiology of the liver
- gall bladder
- pancreas

**Respiratory system:**

- Histology of the nose and Para nasal sinuses
- Histology of the conducting portion of the respiratory tract  
( Trachea, bronchi – bronchioles)
- Histology of the respiratory portion of the lung  
( Respiratory bronchioles, Alveolar ducts, alveoli)

**The urinary system :**

- Uriniferous tubules
- Structure and function of the nephron
- Renal intersititium
- Juxtaglomerular complex
- Renal pelvis and ureter
- Urinary bladder

**Male reproductive system :**

- Seminiferous tubules of the testis
- Seminiferous epithelium
- The cycle of the seminiferous epithelium
- Accessory glands of the male reproductive tract :
- Seminal vesicles
- Prostate gland
- The penis

**Female Reproductive System :**

- Ovary
- The oviduct or fallopian tube
- Uterus
- External genitalia
- Histology of the placenta
- Histology of the mammary gland

**Histology of CNS, eye and ear :**

- Cerebrum
- Cerebellum
- Brain stem
- Spinal cord
- Eye
- Ear

[illegible]

B- Performance under supervision



[illegible]

## Slide examination log book

NO.	Diagnosis of slide	Level of participation *	Location	Signature of supervisor

\* Level of participation

A- Plan and carry out

B- Carry out

C- Carry out under supervision





## Slide examination log book

NO.	Diagnosis of slide	Level of participation *	Location	Signature of supervisor

\* Level of participation

A- Plan and carry out

B- Carry out

C- Carry out under supervision

[illegible]

[illegible]

## Postgraduate student's program Rotation in training assessment

\* **Name:**

\* **Period of training From:**




**To:**

\* **Site:**

\* **Rotation**

General skills	could not judge (0)	strongly disagree (1)	(2 ) (3)	(4 ) (5)	(6)	strongly agree (7)
Perform practice-based improvement activities using a systematic methodology (share in audits and risk management activities And use logbooks).						
Appraises evidence from scientific studies.						
Conduct epidemiological Studies and surveys.						
Perform data management including data entry and analysis and Using information technology to manage information, access on-line medical information; and support their own education.						

General skills	could not judge (0)	strongly disagree (1)	(2 ) (3)	(4 ) (5)	(6)	strongly agree (7)
Facilitate learning of students, lab technical staff and other health care professionals including their evaluation and assessment.						
Maintain therapeutic and ethically sound relationship with patients, their families, lab technical staff and other health professionals.						
Elicit information using effective nonverbal, explanatory, questioning, and writing skills.						
Provide information using effective nonverbal, explanatory, questioning, and writing skills.						
Work effectively with others as a member of a team or other professional group.						
Demonstrate respect, compassion, and integrity; a responsiveness to the needs of patients and society.						
Demonstrate a commitment to ethical principles including provision or withholding of clinical care, confidentiality of patient information, informed consent, business practices.						

General skills	could not judge (0)	strongly disagree (1)	(2 ) (3)		(4 ) (5)		(6)	strongly agree (7)
								
Demonstrate sensitivity and responsiveness to patients' culture, age, gender, and disabilities.								
Work effectively in relevant academic and health care delivery settings and systems including good administrative and time management.								
Adopt cost-effective practice and resource allocation that does not compromise quality of services.								
Assist patients in dealing with system complexities.								



**Pathology Department**  
**Faculty of Medicine**

---

# Course 2: Pathology



# Year One

**Requirements: Credit points: 20 credit point for training in year one**  
Minimal rate of attendance is 80%





**Pathology Department  
Faculty of Medicine**

Clinical training	Credit points	Responsible department	Attendance	Percentage of Achieved points
Training in Pathology Laboratory	3	Pathology department	Training at pathology lab On the Laboratory aspects of the Fixation preparation, cutting and staining of histological sections ( minimal of 100 cases) 2 days /week for 9 weeks	15%
	4		Attendance of trimming room at pathology lab for at least 3 days /week for 8 weeks including The use of departmental protocols for the handling; of specimens including identification, documentation, entering patient data on to computer and measures to prevent specimen mix-ups (at least 100 cases as listed below)	20%
	1		Attendance of Gynecologic lab for at least one day/week for 6 weeks including specimens handling and trimming	5%
	5		Attendance of multihead microscopic slide sessions for at least 2 days /week for at 15 weeks including Microscopic examination of different categories of diseases and provisional diagnosis	25%
	3		Training on student teaching Attendance of at least 4 sections/ week for 6 weeks with senior colleagues	15%
	3		Practice in cytology lab for at least 2 day /week for 9 weeks (at least 50 cases) Recognize adequate and inadequate samples Differentiate between benign & malignant cells Reporting of cytologic specimens	15%
	1		Attendance of immunohistochemistry lab for 1 day/week for 6 weeks	5%
Student signature			Principle coordinator Signature	Head of the department Signature

## Requirements

Principles of dissection of all major cancer resection specimens: minimum of 100 cases of most common resection samples

## Procedure log of:

Observe	Log of under supervision
<ul style="list-style-type: none"> <li>• 20 cases of gross description</li> <li>• 20 cases of trimming</li> <li>• 10 cases of re-trimming</li> </ul>	<ul style="list-style-type: none"> <li>• 20 cases of gross description</li> <li>• 20 cases of trimming</li> <li>• 10 cases of re-trimming</li> </ul>
<b>Independently Perform:</b>	
<ul style="list-style-type: none"> <li>• 30 cases of gross description</li> <li>• 30 cases of trimming</li> <li>• 10 cases of re-trimming</li> </ul>	

## Perform the following basic lab skills

- Possess sufficient manual dexterity to perform dissection safely and accurately, without damage to tissues
- Apply principles of specimen dissection, macroscopic description and block selection in neoplastic and nonneoplastic disease.
- Apply principles of dissection of all major cancer resection specimens
- Know when to resort to special techniques.
- Be able to recognize histological features of histochemical and immunohistochemical stains in normal and diseased tissues.
- Preparation and staining techniques for common specimen type
- Sets up a microscope correctly
- Recognise normal histology and normal variations of common tissue types
- Diagnose common pathologic abnormalities.

**-Be Able to describe and take appropriate blocks from**

	description	Trimming
Mastectomy. -Wide local excision for macroscopic Tumour		
Axillary lymph node dissection		
Radical gastrectomy. -Antrectomy -Colectomy/proctectomy for cancer or inflammatory bowel disease. - Appendicectomy. -Polypectomy		
Open biopsy of lung. Pneumonectomy or lobectomy		
Appropriate handling of orientated or complex skin specimens		
Lymph node for neoplastic and nonneoplastic disease. Taking tissue for supplementary techniques (e.g. flow cytometry		
Mucosal biopsy. Tonsillectomy. Nasal polypectomy. Salivary gland tumours		
Hysterectomy and/or salpingoophorectomy for malignant or benign disease. Cervical loop/ cone biopsy		
Open biopsy of liver. Resections for metastatic tumour. Cholecystectomy		
Vas deferens. Prostate biopsies and chippings. Orchidectomy and prostatectomy Specimens		



**Pathology Department  
Faculty of Medicine**

Thyroidectomy. Parathyroidectomy		
Soft tissue tumour resection, simple (i.e. Lumpectomy Neurosurgical tumour resection and biopsy Specimens		
Renal biopsies. Bladder biopsies. Nephrectomy specimens Handling a trephine bone-biopsy. Use of calcified versus de-calcified Section		



Level of competency

A- Independent performance

B- Performance under supervision

C- Observed



- \* Level of competency
  - A- Independent performance
  - B- Performance under supervision
  - C- Observed



Level of competency

A- Independent performance

B- Performance under supervision

C- Observed



\* Level of competency  
A- Independent performance  
B- Performance under supervision  
C- Observed





Level of competency

A- Independent performance

B- Performance under supervision

C- Observed



Level of competency  
A- Independent performance  
B- Performance under supervision  
C- Observed



\* Level of competency  
A- Independent performance  
B- Performance under supervision  
C- Observed



**Pathology Department**  
**Faculty of Medicine**

---

# Year Two and Three



## Year 2 and 3

Unit	Level (Year)	Credit points		
		Didactic	Training	Total
Unit 1 General Pathology	2,3	3	-	3
Unit 2 :GIT and Liver pathology	2,3	3	15	18
Unit 3 Pathology of female genital organs and breast	2,3	3	15	18
Unit 4 Genitourinary Pathology	2,3	3	15	18
Unit 5 Head and Neck Pathology	2,3	2	10	12
Unit 6 Pathology of intrathoracic organs	2,3	2	10	12
Unit 7 Haematopoietic and lymphatic Pathology	2,3	1	5	6
Unit 8 Soft tissue and Bone Pathology	2,3	2	7	9
Unit 9 Neuropathology	2,3	1	5	6
Unit 10 Endocrine organs pathology	2,3	1	5	6
Unit 11 DermatoPathology	2,3	1	3	4
Unit 12 Cytology	2,3	1	3	4
Unit 13 Immunohistochemistry	2,3	1	3	4
Total		24	96	120

The units are classified as follow for didactic teaching

Unit			
	Didactic Year or level	Training Year or level	Remarks
Unit 1 General Pathology	2	-	
Unit 2 :GIT and Liver pathology	2	2,3	
Unit 3 Pathology of female genital organs and breast	2	2,3	
Unit 4 Genitourinary Pathology	2	2,3	
Unit 5 Head and Neck Pathology	3	2,3	
Unit 6 Pathology of intrathoracic organs	3	2,3	
Unit 7 Haematopoietic and lymphatic Pathology	3	2,3	
Unit 8 Soft tissue and Bone Pathology	3	2,3	
Unit 9 Neuropathology	3	2,3	
Unit 10 Endocrine organs pathology	3	2,3	
Unit 11 DermatoPathology	3	2,3	
Unit 12 Cytology	3	2,3	
Unit 13 Immunohistochemistry	3	2,3	

For practical: the candidate should examine 900- 1000 pathologic cases every year (2,3) as in practical part of each unit

# Year Two

**12 credit points for didactic, 48 credit points for training**

**Minimal rate of attendance is 80%**

**Didactic for year 2 include:**

<b>Unit 1 General Pathology</b>
<b>Unit 2 :GIT and Liver pathology</b>
<b>Unit 3 Pathology of female genital organs and breast</b>
<b>Unit 4 Genitourinary Pathology</b>



**Pathology Department  
Faculty of Medicine**

Name of the course	Credit points	Responsible department	Attendance	Percentage of Achieved points
Unit 1 General Pathology	3	Pathology	Year 2	
	2.75 points		Topics and attendance	
	0.5		5 hours Cellular adaptation cell injury and cell death cell	16.5%
	0.5		5 hours Acute and chronic inflammation and repair	16.5%
	0.25		2.5 hours Heamodynamic disorders	8.5%
	0.25		2.5 hours Infections	8.5%
	0.25		2.5 hours Immunity	8.5%
	0.25		2.5 hours Genetic disorders	8.5%
	0.5		5 hours Neoplasia and tumors	17%
	0.25		2.5 hours Environmental and nutritional disorders Diseases of infancy and childhood	8.5%
	0.25		Formative assessment	8.5%
Student signature			Principle coordinator signature	Head of the department signature





**Pathology Department  
Faculty of Medicine**

Name of the course	Credit points	Responsible department	Attendance	Percentage of Achieved points
Unit 2 GIT and Liver Pathology	3	Pathology	Year 2	
	2.5 points		Topics and attendance	
	0.25		2.5 hours Diseases and tumours of the esophagus	8.5%
	0.5		5 hours Stomach - Congenital anomalies -Gastritis -Peptic ulcer -Gastric tumours	16.5%
	0.5		5 hours Small and large Intestine -Infections -Inflammatory bowel disease (Crohns and ulcerative colitis) -Intestinal obstruction -Intestinal polyps -Tumors of the small and large intestine	16.5%
	0.25		2.5 hours Appendix and anal canal	8.5%
	0.75		7.5 hours Liver -Jaundice -Liver failure -Hepatitis -Cirrhosis -Metabolic disorders -Biliary obstruction -Tumors and tumor like conditions of the liver	25%
	0.25		2.5 hours -Gall bladder and extrahepatic biliary tree -Diseases and tumors of the pancreas	8.5%
	0.25		<b>Seminars</b> Attendance of at least 50% of slide seminars	16.5%
	0.25		<b>Formative assesement</b>	
Student signature			Principle coordinator Signature	Head of the department signature



**Pathology Department  
Faculty of Medicine**

Name of the course	Credit points	Responsible department	Attendance	Percentage of Achieved points
Unit 3 Female genital organs and breast	3	Pathology	Year 2	
	2.5points		Topics and attendance	
	0.5		5 hours Diseases and tumours of the vulva and Vagina Cervix - Cervicitis - Polyps - Cervical intraepithelial neoplasia - Tumours of the cervix	16.5%
	0.5		5hours Uterine corpus - normal endometrium and menstrual cycle - endometritis - endometrial hyperplasia - dysfunctional uterine bleeding - endometrial polyp - endometrial tumors	16.5%
	0.5		5 hours Ovaries - non neoplastic ovarian cysts - Ovarian tumors classification and types - Fallopian tubes	16.5%
	0.25		2.5 hours Disorders of pregnancy - ectopic pregnancy - Pathology of the placenta - Gestational trophoblastic tumors	8.5%
	0.75		7.5 hours Breast -Inflammatory conditions - Proliferative conditions - benign tumors - Breast carcinoma - Diseases of male breast	16.5%
	0.25		<b>Seminars</b> Attendance of at least 50% of seminars	8.5%
	0.25		<b>Formative assessment</b>	8.5%
			Principle coordinator Signature	Head of the department signature
Student signature				



**Pathology Department  
Faculty of Medicine**

Name of the course	Credit points	Responsible department	Attendance	Percentage of Achieved points
Unit 4 Genitourinary	3		Year 2	
	2.5 points		Topics and attendance	
	1		10 hours Kidneys. Clinical manifestations of renal disease. The pathology of renal failure. Glomerular diseases - Renal infarction. Transplantation. Tubulo-interstitial diseases. pyelonephritis Renal stones Renal tumors of adult and childhood	33%
	0.5		5 hours Bladder & ureters. Inflammation, obstruction, calculi and congenital lesions. Neoplasms of the bladder and ureter	16.5%
	0.25		2.5 hours Prostate Gland. Prostatitis: Prostate carcinoma	8.5%
	0.5		5 H Testis. Cryptorchidism, hydrocoele, haematocoele, torsion and orchitis. Neoplasms of the testis	16.5%
	0.25		2.5 hours Epididymis. Cysts, spermatocele, epididymo - orchitis. Penis and Scrotum. Congenital anomalies, inflammations including sexually transmitted diseases, venereal warts, carcinoma of the penis and scrotum. Causes of male infertility	8.5%
	0.25		Seminars	8.5%
	0.25		Formative assessment	8.5%
Student signature			Principle coordinator Signature	Head of the department signature

## Training for year 2

Clinical training	Credit points	Responsible department	Attendance	Percentage of Achieved points
Training at Pathology Laboratories	12	Pathology	Attendance of trimming room at pathology lab for at least 2 days /week for 36 weeks including The use of departmental protocols for the handling; of specimens including identification, documentation, entering patient data on to computer and measures to prevent specimen mix-ups	25%
	4		Attendance of Gynecologic lab for at least one day/week for 24 weeks including specimens handling and trimming, cases diagnosis	8.5%
	15		Attendance of multihead microscopic slide sessions for at least 3 days /week for 30 weeks including Microscopic examination of different categories of diseases and provisional diagnosis	31.25%
	8		Student teaching Attendance of at least 4 sections (2 days)/ week for 24 weeks	16.5%
	3		Practice in cytology lab for at least 2 day /week for 9 weeks (at least 50 cases)  Recognize adequate and inadequate samples Differentiate between benign & malignant cells Reporting of cytologic specimens	6.25%
	3		Attendance of immunohistochemistry lab for 1 day/week for 18 weeks	6.25%
	3		Formative assessment	6.25%
Student signature			Principle coordinator Signature	Head of the department signature

# Year Three

**12 credit points for didactic, 48 credit points for training**

**Minimal rate of attendance is 80%**

**Didactic for year 3 include:**

<b>Unit 5 Head and Neck Pathology</b>
<b>Unit 6 Pathology of intrathoracic organs</b>
<b>Unit 7 Haematopoietic and lymphatic Pathology</b>
<b>Unit 8 Soft tissue and Bone Pathology</b>
<b>Unit 9 Neuropathology</b>
<b>Unit 10 Endocrine organs pathology</b>
<b>Unit 11 DermatoPathology</b>
<b>Unit 12 Immunohistochemistry</b>
<b>Unit 13 Cytology</b>



**Pathology Department**  
**Faculty of Medicine**

Name of the course	Credit points	Responsible department	Attendance	Percentage of Achieved points
<b>Unit 5</b> <b>Head and Neck Pathology</b>	2	Pathology		
	0.5		5 h  Diseases of the Jaw and oral cavity  - Tumors of the jaw and oral cavity classification, subtypes and differential diagnosis	25%
	0.5		5 h  Diseases of salivary glands  - Tumors of salivary glands	25%
	0.5		5 h  - Diseases and tumors of Nose, paranasal sinuses nasopharynx and Larynx	25%
	0.5		5 h  - Diseases and tumors of the Eye and ocular adenexa Diseases of the ear	25%
			Principle coordinator Signature	Head of the department signature



**Pathology Department  
Faculty of Medicine**

Name of the course	Credit points	Responsible department	Attendance	Percentage of Achieved points
<b>Unit 6 Intrathoracic organs</b>	2			
	1.5 points		Topics and attendance	
	0.25		2.5 h Nonneoplastic pulmonary diseases Pulmonary infections	
			Lung abscess and its complications. Pulmonary tuberculosis. Restrictive lung diseases and acute interstitial lung disease (and chronic interstitial lung disease. Obstructive pulmonary disease: Emphysema: (COPD). Bronchiectasis:	
	0.25		2.5 h Neoplasms of the lung: bronchiogenic carcinoma Other primary neoplasms, benign and malignant. Metastatic lung tumours	
	0.25		2.5 h Diseases of the pleura: pleurisy, effusions, fibrosis, pleural plaques, neoplasms.	
	0.25		2.5 h Principles of diseases of The Mediastinum - Thymus and thymoma	
	0.5		5 h -Principles of diseases of the heart and the blood vessels. Ischaemic heart disease: Hypertension: Valvular disease: - Pericardial disease: Tumours of the heart Vascular diseases: :aneurysms, Vasculitis. Miscellaneous disorders (Tumours and tumour-like lesions of vessels	
	0.25		Formative Assessment	8.5%
	0.25		<b>Seminars</b> Attendance of at least 50% of slide seminars	8.5%
Student signature			Principle coordinator Signature	Head of the department signature

Name of the course	Credit points	Responsible department	Attendance	Percentage of Achieved points
<b>Unit 7</b> <b>Heamatopoeitic and lymphatic</b>		Pathology	Year 3	
	1 point		Topics and attendance	
	0.5		5hours Non hodgkins lymphoma - classification, morphology, molecular pathology	50%
	0.25		2.5 hours - Hodgkins lymphoma - classification and morphology. Clinical features, staging	25%
	0.25		2.5 hours - Reactive hyperplasia Morphology and causes of follicular hyperplasia, paracortical hyperplasia and sinus histiocytosis. Lymphadenitis, non-specific and specific forms.  - Spleen: Causes of splenomegaly. - Tumors of the spleen	25%
Student signature			Principle coordinator Signature	Head of the department signature





**Pathology Department  
Faculty of Medicine**

Name of the course	Credit points	Responsible department	Attendance	Percentage of Achieved points
Unit 8 Soft tissue and Bone	2	Pathology	Year 3	
	1.75 points		Topics and attendance	
	0.25		2.5 h Nonneoplastic disorders and tumor like conditions of the soft tissue	12.5%
	0.5		5 h Soft tissue tumors - Classification - Types - Differential diagnosis	25%
	0.25		2.5 h Nonneoplastic diseases of bone	12.5%
	0.5		5 h Bone tumors Classification Types	25%
	0.25		2.5 h And principles of Disease of the joints and Diseases of muscles	12.5%
	0.25		Formative Assessment	12.5%
Student signature			Principle coordinator signature	Head of the department signature



**Pathology Department  
Faculty of Medicine**

Name of the course	Credit points	Responsible department	Attendance	Percentage of Achieved points
Unit 9 Noeuropathology		Pathology	Year 3	
	1 points		Topics and attendance	
	0.25		2.5 h Diseases of brain tissue Intracranial space-occupying lesions Cerebrovascular disease	25%
	0.5		5 h Neoplasms: classification. Clinicopathological features. Characteristics of the various types	50%
	0.25		2.5 h Peripheral nervous system	25%
Student signature			Principle coordinator signature	Head of the department signature

Name of the course	Credit points	Responsible department	Attendance	Percentage of Achieved points
Unit 10 Endocrine		Pathology	Year 3	
	1 points		Topics and attendance	
	0.5		5 h Hyperthyroidism. .thyrotoxicosis Grave's disease Other causes thyrotoxicosis - functioning adenoma and toxic nodular goitre. Hypothyroidism. Myxoedema and cretinism. Hashimotos's thyroiditis - Solitary nodules - Neoplasms. Adenoma. Carcinomas - classification, pathogenesis including genetic and environmental factors and pre-existing thyroid disease. Morphology of the different types, spread, and clinical features including differences in prognosis. Lymphoma of the thyroid .Parathyroids	50%
	0.5		5 h Pituitary. Adrenals The Endocrine Pancreas. Diabetes mellitus: Islet cell tumours.	50%
Student signature			Principle coordinator signature	Head of the department signature

Name of the course	Credit points	Responsible department	Attendance	Percentage of Achieved points
Unit 11 Dermatopathology		Pathology	Year 2	
	1 point		Topics and attendance	
	0.5		5 h Principles of The vocabulary of skin diseases: clinical and histological terms. Principles of skin biopsy Acute inflammatory dermatoses: urticaria, dermatitis and erythema multiforme Chronic inflammatory dermatoses: psoriasis and lichen planus Bullous diseases: pemphigus, bullous pemphigoid and dermatitis herpetiformis Eczema, psoriasis and lichenoid eruptions	50%
	0.5		5 h Common benign epithelial tumours. Squamous and basal cell carcinoma epidermal tumours; soft tissue tumours; cutaneous lymphoma; granulomatous and infectious diseases; appendageal tumours/BCCs Naevi and dysplastic naevi. Malignant melanoma	50%
Student signature			Principle coordinator signature	Head of the department signature

Name of the course	Credit points	Responsible department	Attendance	Percentage of Achieved points
Unit 12 Cytology		Pathology	Year 2	
	1 point		Topics and attendance	
	0.5		5 h Principles of Smear-taking technique Basic knowledge of preparation and staining techniques for common specimen types. Knowledge of use of special techniques, e.g. immunocytochemistry	50%
	0.5		5 h Diagnosis Features of malignancy in sites commonly investigated with cytopathology. Features of specific non-malignant Diagnoses, e.g. infection.	50%
Student signature			Principle coordinator signature	Head of the department signature



**Pathology Department  
Faculty of Medicine**

Name of the course	Credit points	Responsible department	Attendance	Percentage of Achieved points
Unit 13 Immunohistochemistry	1	Pathology	Year 3	
	0.5 point		Topics and attendance	
	0.5		1-The basics of preparation and staining techniques for common specimen types 2. The principles of immunohistochemical methods and the principles of common molecular pathology techniques and when to resort to them. 3. The panels of antibodies for particular diagnostic applications 4. The pitfalls in diagnosis & limitations	50%
	0.25		Seminars	25%
	0.25		Formative Assessment	25%
			Principle coordinator signature	Head of the department signature
Student signature				

### Year 3 training

Clinical training	Credit points	Responsible department	Attendance	Percentage of Achieved points
Training at Pathology Laboratories	12	Pathology	Attendance of trimming room at pathology lab for at least 2 days /week for 36 weeks including The use of departmental protocols for the handling; of specimens including identification, documentation, entering patient data on to computer and measures to prevent specimen mix-ups (Cases are listed below)	25%
	4		Attendance of Gynecologic lab for at least one day/week for 24 weeks including specimens handling and trimming, cases diagnosis	8.5%
	15		Attendance of multihead microscopic slide sessions for at least 3 days /week for 30 weeks including Microscopic examination of different categories of diseases and provisional diagnosis	31.25%
	8		Student teaching Attendance of at least 4 sections/ week (2 days) for 24 weeks	16.5%
	3		Practice in cytology lab for at least 2 day /week for 9 weeks (at least 50 cases) Recognize adequate and inadequate samples Differentiate between benign & malignant cells Reporting of cytologic specimens	6.25%
	3		Attendance of immunohistochemistry lab for 1 day/week for 18 weeks	6.25%
	3		Formative assessment	6.25%
			Principle coordinator Signature	Head of the department signature
Student signature				

# Unit 1

## General Pathology







## Unit 1 General Pathology

### Requirements

- Attendance of multihead microscope sessions (100 cases in different categories)
- Practice at the department including interpretation of their different cases

NO.	Diagnosis of case	Level of participation *	Location	Signature of supervisor

\* Level of participation

A- Plan and carry out

B- Carry out

C- Carry out under supervision

[illegible]

*Master Degree of Pathology Log Book*



Attendance of at least 80% of course lectures

[illegible]

# Unit 2

## GIT and Liver Pathology



**Unit 2**  
**GIT and Liver Pathology**

***Rotation / attendance proof***  
**الأماكن التي تدرب بها**

الفترة من - إلي	أسم المعامل التي تدرب بها	توقيع رئيس القسم	توقيع مدير المعمل

**Requirements**

- Attendance of multihead microscope sessions ( cases in each year)
- Practice at the department including interpretation of their different cases

### Pathologic cases log

Cases	No
<ul style="list-style-type: none"> <li>- Attendance of practical multihead microscope sessions</li> <li>- Practice in the department including interpretation of their different cases</li> <li>- Microscopic Examination and interpretation of at least 80 slides related to diseases of   GIT and Liver including both neoplastic and non neoplastic lesions</li> <li>- recognize H pylori, esophageal and gastric malignancies in biopsy</li> <li>- report esophageal and gastric malignancy resection specimens</li> <li>- report benign and malignant lesions in endoscopic biopsies</li> <li>- recognize normal, benign and malignant lesions in biopsies</li> <li>- report IBD in Biopsy</li> <li>- report colorectal carcinoma resection specimen</li> <li>- report normal liver in bx and special stains</li> </ul>	<b>80 cases</b> <b>In each</b> <b>year</b>
-Daily Review of Surgical Pathology Cases: The candidate will participate in the daily microscopic evaluation of specimens. He/She will be expected to review the microscopic slides in advance, obtain appropriate histories from patient's medical records, and arrive at a preliminary diagnosis. The candidate will then be responsible for assimilating and dictating the final surgical pathology report.	20 cases I each year



\* Level of participation  
A- Plan and carry out  
B- Carry out  
C- Carry out under supervision



\* Level of participation  
A- Plan and carry out  
B- Carry out  
C- Carry out under supervision





Attendance of at least 80% of course lectures

[illegible]



### Procedures log book

Cases	No
<p>Gross specimen log of</p> <ul style="list-style-type: none"> <li>- Radical esophagectomy</li> <li>- Radical gastrectomy</li> <li>- endoscopic biopsy orientation</li> <li>- colectomy for cancer or inflammatory bowel disease</li> <li>- appendectomy</li> <li>- polepectomy</li> </ul> <p>Liver: - open biopsy liver</p> <ul style="list-style-type: none"> <li>- resection for metastatic tumors</li> <li>- cholecystectomy</li> </ul>	<p><b>Observe:</b></p> <ul style="list-style-type: none"> <li>• 10 cases of gross description</li> <li>• 10 cases of trimming</li> </ul> <p><b>Log of under supervision:</b></p> <ul style="list-style-type: none"> <li>- 10 cases of gross description</li> <li>- 10 cases of trimming</li> </ul> <p><b>Independently Perform:</b></p> <ul style="list-style-type: none"> <li>- 10 cases of gross description</li> <li>- 10 cases of trimming</li> </ul>



Level of participation

- A- Plan and carry out
- B- Carry out
- C- Carry out under supervision



Level of participation  
A- Plan and carry out  
B- Carry out  
C- Carry out under supervision

## Unit 3

# Pathology of Female Genital Organs and Breast



### Rotation / attendance proof

الأماكن التي تدرب بها

الفترة من - إلي	أسم المعامل التي تدرب بها	توقيع رئيس القسم	توقيع مدير المعمل

### Pathologic cases log

#### Requirements

Cases	Number
<p>Microscopic Examination and interpretation of at least 80 slides including both neoplastic and non neoplastic lesions</p> <ul style="list-style-type: none"> <li>- report leiomyomata</li> <li>- Endometrial dating</li> <li>- report endometrial and cervical cancer</li> <li>- report hysterectomy</li> <li>- diagnose benign and malignant breast lesions in biopsy</li> <li>- report mastectomy or wide local excisions specimen</li> </ul>	<p><b>80 cases in each year</b></p>
<p>-Daily Review of Surgical Pathology Cases: The candidate will participate in the daily microscopic evaluation of specimens. He/She will be expected to review the microscopic slides in advance, obtain appropriate histories from patient's medical records, and arrive at a preliminary diagnosis. The candidate will then be responsible for assimilating and dictating the final surgical pathology report.</p>	<p>20 cases in each year</p>



\* Level of participation  
A- Plan and carry out  
B- Carry out  
C- Carry out under supervision

[illegible]

C- Carry out under supervision





Attendance of at least 80% of course lectures

[illegible]



## Procedure Log book

<p>Gross specimen log of</p> <ul style="list-style-type: none"> <li>- Hysterectomy with bilateral salpingoopherectomy for benign and malignant diseases</li> <li>- Cervical cone bx</li> <li>- Endometrial curettage</li> <li>- Breast: lumpectomy and mastectomy</li> <li>- Axillary lymph node dissection</li> </ul>	<p><b>Observe:</b></p> <ul style="list-style-type: none"> <li>• 10 cases of gross description</li> <li>• 10 cases of trimming</li> </ul> <p><b>Log of under supervision:</b></p> <ul style="list-style-type: none"> <li>- 10 cases of gross description</li> <li>- 10 cases of trimming</li> </ul> <p><b>Independently Perform:</b></p> <ul style="list-style-type: none"> <li>- 10 cases of gross description</li> <li>- 10 cases of trimming</li> </ul>
--	---

[illegible]

C- Carry out under supervision

[illegible]

C- Carry out under supervision

# Unit 4

# Genitourinary Pathology



## Rotation / attendance proof

الأماكن التي تدرب بها

الفترة من - إلى	أسم المعامل التي تدرب بها	توقيع رئيس القسم	توقيع مدير المعمل

## Pathologic cases log

### Requirements

Cases	Number
<p>Attendance of practical multihead microscope sessions</p> <ul style="list-style-type: none"> <li>- Practice in the department including interpretation of their different cases</li> <li>- Microscopic Examination and interpretation of at least 80 slides related to <ul style="list-style-type: none"> <li>- inflammatory lesion and cancer in bladder bx</li> <li>- Report glomerulonephritis and special techniques</li> <li>- report radical nephrectomy</li> <li>- recognize cancer in prostatic needle bx</li> <li>- report orchidectomy</li> <li>- determine male infertility</li> </ul> </li> </ul>	<p><b>80 cases in each year</b></p>
<p>-Daily Review of Surgical Pathology Cases: The candidate will participate in the daily microscopic evaluation of specimens. He/She will be expected to review the microscopic slides in advance, obtain appropriate histories from patient's medical records, and arrive at a preliminary diagnosis. The candidate will then be responsible for assimilating and dictating the final surgical pathology report.</p>	<p>20 cases in each year</p>

[illegible]

C- Carry out under supervision

[illegible]

C- Carry out under supervision





Attendance of at least 80% of course lectures

[illegible]

## Procedures log book

### Requirements

<p>Gross specimen log of</p> <ul style="list-style-type: none"> <li>-renal biopsy</li> <li>- Bladder bx and cystectomy</li> <li>- Radical nephrectomy</li> <li>- Prostate biopsy and chipping</li> <li>- orchedectomy</li> <li>- Prostatectomy</li> <li>- Testicular bx</li> </ul>	<p><b>Observe:</b></p> <ul style="list-style-type: none"> <li>- 10 cases of gross description</li> <li>- 10 cases of trimming</li> </ul> <p><b>Log of under supervision:</b></p> <ul style="list-style-type: none"> <li>- 10 cases of gross description</li> <li>- 10 cases of trimming</li> </ul> <p><b>Independently Perform:</b></p> <ul style="list-style-type: none"> <li>- 10 cases of gross description</li> <li>- 10 cases of trimming</li> </ul>
--	---

[illegible]

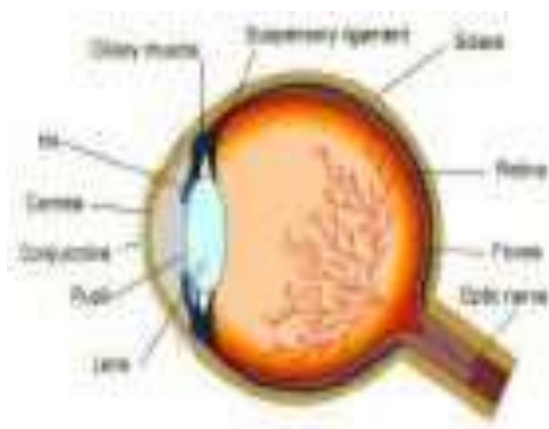
C- Carry out under supervision

[illegible]

C- Carry out under supervision

## Unit 5

# Head and neck Pathology



## Unit 5

### **Head and neck Pathology** **Rotation / attendance proof** **الأماكن التي تدرب بها**

الفترة من - إلى	أسم المعامل التي تدرب بها	توقيع رئيس القسم	توقيع مدير المعمل

### Pathologic cases log

### Requirements

Cases	Number
<p>Attendance of practical multihead microscope sessions</p> <ul style="list-style-type: none"> <li>- Practice in the department including interpretation of their different cases</li> <li>- Examination of at least 80 slides related to diseases of head and neck including both neoplastic and non neoplastic lesions</li> <li>- Identify reactive versus malignant conditions</li> <li>- Typing of salivary gland tumors</li> <li>- Nasopharyngeal reactive conditions</li> <li>- Tumors of the eye</li> </ul>	80 cases
<p>-Daily Review of Surgical Pathology Cases: The candidate will participate in the daily microscopic evaluation of specimens. He/She will be expected to review the microscopic slides in advance, obtain appropriate histories from patient's medical records, and arrive at a preliminary diagnosis. The candidate will then be responsible for assimilating and dictating the final surgical pathology report.</p>	20 cases In each year



Level of participation  
A- Plan and carry out  
B- Carry out  
C- Carry out under supervision

[illegible]

C- Carry out under supervision





Attendance of at least 80% of course lectures

[illegible]

## Procedures log book

<p>Gross specimen log of</p> <ul style="list-style-type: none"> <li>- Tonsillectomy</li> <li>- Eye enucleation</li> <li>- Polypectomy</li> <li>- Laryngectomy</li> <li>- Salivary gland tumors</li> </ul>	<p><b>Observe:</b></p> <ul style="list-style-type: none"> <li>• 10 cases of gross description</li> <li>• 10 cases of trimming</li> </ul> <p><b>Log of under supervision:</b></p> <ul style="list-style-type: none"> <li>- 10 cases of gross description</li> <li>- 10 cases of trimming</li> </ul> <p><b>Independently Perform:</b></p> <ul style="list-style-type: none"> <li>- 10 cases of gross description</li> <li>- 10 cases of trimming</li> </ul>
---	---



Level of participation

- A- Plan and carry out
- B- Carry out
- C- Carry out under supervision



C- Carry out under supervision

## Unit 6

# Pathology of Intrathoracic organs



## Unit 6

### Pathology of Intrathoracic organs

#### Rotation / attendance proof

الأماكن التي تدرب بها

الفترة من - إلى	أسم المعامل التي تدرب بها	توقيع رئيس القسم	توقيع مدير المعمل

### Pathologic cases log

#### Requirements

Cases	Number
<ul style="list-style-type: none"> <li>- Attendance of practical multihead microscope sessions</li> <li>- Practice in the department including interpretation of their different cases</li> <li>- Microscopic Examination and interpretation of at least 50 slides related to diseases of lungs heart and blood vessels including both neoplastic and non neoplastic lesions</li> <li>- recognize presence of cancer in lung biopsies and typing</li> <li>- Inflammatory lesions</li> <li>- report lung cancer resection specimens</li> <li>- recognize vasculitis</li> <li>- report endocarditis</li> <li>- differential diagnosis of mediastinal mass in needle bx</li> </ul>	<b>50 cases</b>
<p>-Daily Review of Surgical Pathology Cases: The candidate will participate in the daily microscopic evaluation of specimens. He/She will be expected to review the microscopic slides in advance, obtain appropriate histories from patient's medical records, and arrive at a preliminary diagnosis. The candidate will then be responsible for assimilating and dictating the final surgical pathology report.</p>	20 cases In each year

[illegible]

C- Carry out under supervision

[illegible]

C- Carry out under supervision





Attendance of at least 80% of course lectures

[illegible]



## Procedures log book

### Requirements

Gross specimen log of	
- Open lung biopsy	- <b>Observe:</b>
- lobectomy and pneumonectomy	• 5 cases of gross description
- Pleural biopsy	• 5 cases of trimming
- blood vessels orientation	- <b>Log of under supervision:</b>
- valve and endomyocardial biopsies	• 5 cases of gross description
	• 5 cases of trimming
	- <b>Independently Perform:</b>
	• 5 cases of gross description
	• 5 cases of trimming



\* Level of participation  
A- Plan and carry out  
B- Carry out  
C- Carry out under supervision

## Unit 7

# Haematopoietic and lymphatic Pathology



**Rotation / attendance proof**  
الأماكن التي تدرب بها

الفترة من - إلي	أسم المعامل التي تدرب بها	توقيع رئيس القسم	توقيع مدير المعمل

**Pathologic cases log**

**Requirements**

cases	No
<ul style="list-style-type: none"> <li>- Attendance of practical multihead microscope sessions</li> <li>- Practice in the department including interpretation of their different cases</li> </ul> <p>Microscopic examination and diagnosis log of:</p> <ul style="list-style-type: none"> <li>- screen lymph node for metastatic tumors</li> <li>- recognize common reactive nodal patterns</li> <li>- report lymphomas</li> <li>- common diseases of the spleen</li> </ul>	<b>50 cases</b>
-Daily Review of Surgical Pathology Cases: The candidate will participate in the daily microscopic evaluation of specimens. He/She will be expected to review the microscopic slides in advance, obtain appropriate histories from patient's medical records, and arrive at a preliminary diagnosis. The candidate will then be responsible for assimilating and dictating the final surgical pathology report.	20 cases In each year



Level of participation

- A- Plan and carry out
- B- Carry out
- C- Carry out under supervision

[illegible]

C- Carry out under supervision



Attendance of at least 80% of course lectures

[illegible]



## Procedures log book

### Requirements

<p>Log of:</p> <ul style="list-style-type: none"> <li>- lymph node for neoplastic and non neoplastic nodal lesions</li> <li>- taking tissue for supplementary techniques</li> </ul>	<ul style="list-style-type: none"> <li>- <b>Observe:</b> <ul style="list-style-type: none"> <li>• 5 cases of gross description</li> <li>• 5 cases of trimming</li> </ul> </li> <li>- <b>Log of under supervision:</b> <ul style="list-style-type: none"> <li>5 cases of gross description</li> <li>5 cases of trimming</li> </ul> </li> <li>- <b>Independently Perform:</b> <ul style="list-style-type: none"> <li>5 cases of gross description</li> <li>5 cases of trimming</li> </ul> </li> </ul>
---	---



Level of participation

- A- Plan and carry out
- B- Carry out
- C- Carry out under supervision



Pathology Department  
Faculty of Medicine

---

## Unit 8

# Soft Tissue and Bone Pathology

## Rotation / attendance proof

الأماكن التي تدرب بها

الفترة من - إلي	أسم المعامل التي تدرب بها	توقيع رئيس القسم	توقيع مدير المعمل

### Pathologic cases log Requirements

cases	No
<ul style="list-style-type: none"> <li>- Attendance of practical multihead microscope sessions</li> <li>- Practice in the department including interpretation of their different cases</li> <li>- Microscopic Examination and interpretation log: of at least 50 slides related to diseases of both neoplastic and non neoplastic lesions <ul style="list-style-type: none"> <li>- recognize morphological features suggestive of main subtypes of tumors of the soft tissue</li> <li>- recognize normal bone and normal synovium</li> <li>- benign and malignant bone lesions</li> <li>- diagnose pseudosarcoma</li> </ul> </li> </ul>	<b>50 cases in each year</b>
-Daily Review of Surgical Pathology Cases: The candidate will participate in the daily microscopic evaluation of specimens. He/She will be expected to review the microscopic slides in advance, obtain appropriate histories from patient's medical records, and arrive at a preliminary diagnosis. The candidate will then be responsible for assimilating and dictating the final surgical pathology report.	20 cases In each year



Level of participation

- A- Plan and carry out
- B- Carry out
- C- Carry out under supervision

[illegible]

C- Carry out under supervision



Attendance of at least 80% of course lectures

[illegible]

## Procedures log book

### Requirements

<ul style="list-style-type: none"> <li>- soft tissue tumor resection</li> <li>- calcified versus decalcified bone specimens</li> <li>- synovectomy samples</li> </ul>	<p>Log of:</p> <ul style="list-style-type: none"> <li>- <b>Observe:</b> <ul style="list-style-type: none"> <li>• 5 cases of gross description</li> <li>• 5 cases of trimming</li> </ul> </li> <li>- <b>Log of under supervision:</b> <ul style="list-style-type: none"> <li>5 cases of gross description</li> <li>5 cases of trimming</li> </ul> </li> <li>- <b>Independently Perform:</b> <ul style="list-style-type: none"> <li>5 cases of gross description</li> <li>5 cases of trimming</li> </ul> </li> </ul>
---	--





Level of participation  
A- Plan and carry out  
B- Carry out  
C- Carry out under supervision

# Unit 9

## Neuropathology



### Rotation / attendance proof

الأماكن التي تدرب بها

الفترة من - إلي	أسم المعامل التي تدرب بها	توقيع رئيس القسم	توقيع مدير المعمل

### Pathologic cases log

#### Requirements

Cases	Number
<ul style="list-style-type: none"> <li>- Attendance of practical multihead microscope sessions</li> <li>- Practice in the department including interpretation of their different cases</li> <li>- Diagnose and distinguish primary from metastatic tumors of the brain</li> <li>- recognize the most common types of gliomas</li> <li>- diagnose benign tumors of the meninges, brain and peripheral nerves</li> </ul>	<b>50 cases in each year</b>
-Daily Review of Surgical Pathology Cases: The candidate will participate in the daily microscopic evaluation of specimens. He/She will be expected to review the microscopic slides in advance, obtain appropriate histories from patient's medical records, and arrive at a preliminary diagnosis. The candidate will then be responsible for assimilating and dictating the final surgical pathology report.	10 cases In each year



Level of participation  
A- Plan and carry out  
B- Carry out  
C- Carry out under supervision

[illegible]

C- Carry out under supervision



Attendance of at least 80% of course lectures

[illegible]

## Procedures log book

### Requirements

<p>Log of :</p> <ul style="list-style-type: none"> <li>- Neurosurgical tumors resection and bx specimens</li> <li>- stereotactic biopsies</li> <li>- Nerve biopsies</li> </ul>	<ul style="list-style-type: none"> <li>- <b>Observe:</b> <ul style="list-style-type: none"> <li>• 5 cases of gross description</li> <li>• 5 cases of trimming</li> </ul> </li> <li>- <b>Log of under supervision:</b> <ul style="list-style-type: none"> <li>- 5 cases of gross description</li> <li>- 5 cases of trimming</li> </ul> </li> <li>- <b>Independently Perform:</b> <ul style="list-style-type: none"> <li>- 5 cases of gross description</li> <li>- 5 cases of trimming</li> </ul> </li> </ul>
--	---



Level of participation

- A- Plan and carry out
- B- Carry out
- C- Carry out under supervision





# Unit 10

# Endocrine Pathology

## Rotation / attendance proof

الأماكن التي تدرب بها

الفترة من - إلى	أسم المعامل التي تدرب بها	توقيع رئيس القسم	توقيع مدير المعمل

## Pathologic cases log

### Requirements

Cases	Number
<ul style="list-style-type: none"> <li>- Attendance of practical multihead microscope sessions</li> <li>- Practice in the department including interpretation of their different cases</li> <li>- recognize normal thyroid and parathyroid</li> <li>- recognize benign and malignant lesions of endocrine organs</li> <li>- inflammatory conditions</li> <li>- diagnose malignancy of endocrine organs</li> </ul>	<b>50 cases in each year</b>
-Daily Review of Surgical Pathology Cases: The candidate will participate in the daily microscopic evaluation of specimens. He/She will be expected to review the microscopic slides in advance, obtain appropriate histories from patient's medical records, and arrive at a preliminary diagnosis. The candidate will then be responsible for assimilating and dictating the final surgical pathology report.	10 cases In each year

[illegible]

C- Carry out under supervision

[illegible]

C- Carry out under supervision



Attendance of at least 80% of course lectures

[illegible]



## Procedures log book

### Requirements

Cases	Number
<b>Log Of:</b> <ul style="list-style-type: none"> <li>- thyroidectomy</li> <li>- parathyroidectomy</li> </ul> suprarenal biopsy	<ul style="list-style-type: none"> <li>- <b>Observe:</b> <ul style="list-style-type: none"> <li>• 5 cases of gross description</li> <li>• 5 cases of trimming</li> </ul> </li> <li>- <b>Log of under supervision:</b> <ul style="list-style-type: none"> <li>5 cases of gross description</li> <li>5 cases of trimming</li> </ul> </li> <li>- <b>Independently Perform:</b> <ul style="list-style-type: none"> <li>5 cases of gross description</li> <li>5 cases of trimming</li> </ul> </li> </ul>



Level of participation

- A- Plan and carry out
- B- Carry out
- C- Carry out under supervision



Pathology Department  
Faculty of Medicine

---

# Unit 11

# Dermatopathology



**Rotation / attendance proof**  
**الأماكن التي تدرب بها**

الفترة من - إلي	أسم المعامل التي تدرب بها	توقيع رئيس القسم	توقيع مدير المعمل

**Pathologic cases log**

**Requirements**

Cases	Number
<ul style="list-style-type: none"> <li>- Attendance of practical multihead microscope sessions</li> <li>- Practice in the department including interpretation of their different cases</li> <li>- Microscopic Examination and interpretation of at least 50 slides related to skin lesions</li> <li>- Diagnose basic skin cancer types</li> <li>- Presence of severely atypical features in naevi.</li> <li>- Adequate morphological description of features seen in an inflammatory skin biopsy</li> </ul>	<b>50 cases in each year</b>
-Daily Review of Surgical Pathology Cases: The candidate will participate in the daily microscopic evaluation of specimens. He/She will be expected to review the microscopic slides in advance, obtain appropriate histories from patient's medical records, and arrive at a preliminary diagnosis. The candidate will then be responsible for assimilating and dictating the final surgical pathology report.	10 cases In each year

[illegible]

C- Carry out under supervision

[illegible]

C- Carry out under supervision



Attendance of at least 80% of course lectures

[illegible]

## Procedures log book

### Requirements

<p><b>Log of</b></p> <ul style="list-style-type: none"> <li>- Accurate gross description of skin lesions.</li> <li>- Appropriate handling of ori-entated or complex skin specimens.</li> </ul>	<ul style="list-style-type: none"> <li>- <b>Observe:</b> <ul style="list-style-type: none"> <li>• 5 cases of gross description</li> <li>• 5 cases of trimming</li> </ul> </li> <li>- <b>Log of under supervision:</b> <ul style="list-style-type: none"> <li>- 5 cases of gross description</li> <li>- 5 cases of trimming</li> </ul> </li> <li>- <b>Independently Perform:</b> <ul style="list-style-type: none"> <li>- 5 cases of gross description</li> <li>- 5 cases of trimming</li> </ul> </li> </ul>
--	---



Level of participation

- A- Plan and carry out
- B- Carry out
- C- Carry out under supervision



**Pathology Department**  
**Faculty of Medicine**

---

# Unit 12

## Cytology

### Rotation / attendance proof

الأماكن التي تدرب بها

الفترة من - إلي	أسم المعامل التي تدرب بها	توقيع رئيس القسم	توقيع مدير المعمل

### Pathologic cases log

#### Requirements

- Attendance of practical multihead microscope sessions
- Practice in the department including interpretation of their different cases
- Recognize inadequate samples
- Differentiate between benign & malignant cells
- Proper reporting of cytological specimens (20 cases in each year)
- Diagnosis of cytologic specimens (100) cases in each year





Level of participation  
A- Plan and carry out  
B- Carry out  
C- Carry out under supervision

[illegible]

C- Carry out under supervision



Level of participation  
A- Plan and carry out  
B- Carry out  
C- Carry out under supervision



Attendance of at least 80% of course lectures

[illegible]

## Procedures log book

### Requirements

#### Observe:

- 20 cases of cytologic preparation

#### Log of under supervision:

- 20 cases of cytologic preparation

#### Independently Perform:

- 20 cases of cytologic preparation

## Cytologic preparations

NO.	Level of competency*	Location	Signature

### Level of participation

A- Plan and carry out

B- Carry out

C- Carry out under supervision



# Unit 13

# Immunohistochemistry



### Rotation / attendance proof

الأماكن التي تدرب بها

الفترة من - إلى	أسم المعامل التي تدرب بها	توقيع رئيس القسم	توقيع مدير المعمل

### Pathologic cases log Requirements

- Attendance practical multihead microscope sessions
- Practice in the department including interpretation of their different cases.
- **Diagnose** malignancy with confidence in specimens from breast, GI tract, respira-tory tract, urinary tract, head and neck, soft tissue, lymphoreticular system, and serous fluids.
- **Choose** the most cost effective & reliable battery necessary for diagnosis
- put a suitable differential diagnosis



[illegible]

C- Carry out under supervision

[illegible]

C- Carry out under supervision



Attendance of at least 80% of course lectures

[illegible]

## Procedures log book

### Requirements

<p>1. The basics of preparation and staining techniques for common specimen types</p> <p>2. The principles of immunohistochemical methods and the principles of common molecular pathology techniques and when to resort to them.</p> <p>3. The panels of antibodies for particular diagnostic applications</p> <p>4. The pitfalls in diagnosis &amp; limitations</p>	<ul style="list-style-type: none"> <li>- <b>Observe:</b> <ul style="list-style-type: none"> <li>• 20 cases of gross description</li> <li>• 20 cases of trimming</li> </ul> </li> <li>- <b>Log of under supervision:</b> <ul style="list-style-type: none"> <li>- 20 cases of gross description</li> <li>- 20 cases of trimming</li> </ul> </li> <li>- <b>Independently Perform:</b> <ul style="list-style-type: none"> <li>- 20 cases of gross description</li> <li>- 20 cases of trimming</li> </ul> </li> </ul>
---	---



\* Level of competency  
A- Independent performance  
B- Performance under supervision  
C- Observed

[illegible]

[illegible]

[illegible]



[illegible]

## Postgraduate student's program Rotation in training assessment

\* **Name:**

\* **Period of training From:**

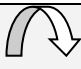


**To:**

\* **Site:**

\* **Rotation**

General skills	could not judge (0)	strongly disagree (1)	(2 ) (3)	(4 ) (5)	(6)	strongly agree (7)
Perform practice-based improvement activities using a systematic methodology (share in audits and risk management activities And use logbooks).						
Appraises evidence from scientific studies.						
Conduct epidemiological Studies and surveys.						
Perform data management including data entry and analysis and Using information technology to manage information, access on-line medical information; and support their own education.						

General skills	could not judge (0)	strongly disagree (1)	(2 ) (3)	(4 ) (5)	(6)	strongly agree (7)
Facilitate learning of students, lab technical staff and other health care professionals including their evaluation and assessment.						
Maintain therapeutic and ethically sound relationship with patients, their families, lab technical staff and other health professionals.						
Elicit information using effective nonverbal, explanatory, questioning, and writing skills.						
Provide information using effective nonverbal, explanatory, questioning, and writing skills.						
Work effectively with others as a member of a team or other professional group.						
Demonstrate respect, compassion, and integrity; a responsiveness to the needs of patients and society.						
Demonstrate a commitment to ethical principles including provision or withholding of clinical care, confidentiality of patient information, informed consent, business practices.						

<b>General skills</b>	<b>could not judge (0)</b>	<b>strongly disagree (1)</b>	 <b>(2 ) (3)</b>		 <b>(4 ) (5)</b>		 <b>(6) strongly agree (7)</b>
Demonstrate sensitivity and responsiveness to patients' culture, age, gender, and disabilities.							
Work effectively in relevant academic and health care delivery settings and systems including good administrative and time management.							
Adopt cost-effective practice and resource allocation that does not compromise quality of services.							
Assist patients in dealing with system complexities.							

# Elective Course

## Requirements

● **Credit points:** 2 credit point.

- Minimal rate of attendance 80% of lectures and 80% of training
- **One of these courses**
  - Medical statistics.
  - Evidence based medicine.
  - Medicolegal Aspects and Ethics in Medical Practice and Scientific Research
  - Quality assurance of medical education.
  - Quality assurance of clinical practice.
  - Hospital management



## Elective Course Lectures

[illegible]



## Elective Course    Practical skills

[illegible]



## Academic activities

## Seminars

## Requirements

- Attendance of at least 50% of the departmental seminars
- Presentation of at least 3 cases in the seminar per year
- Log of at least 1 evidence-based guideline

## First: Attendance

[illegible]



[illegible]

[illegible]



## Lecture, journal club, conferences, workshop

[illegible]

**\*\* Your role:-**

## A- Attendance

## B- Organization

## C- Presentation



### Formative assessment and MCQ

Exam	Score	Grade*	Date	Signature

#### \*Degree

- A- Excellent
- B- Very good
- C- Good
- D- Pass

الرسائل العلمية

عنوان الرسالة

عربي : \_\_\_\_\_

انجليزي : \_\_\_\_\_

المشرفون : \_\_\_\_\_

1- \_\_\_\_\_

2- \_\_\_\_\_

3- \_\_\_\_\_

4- \_\_\_\_\_

تاريخ القيد لدرجة : ..... / / 2008

تاريخ التسجيل الموضوع : .....

المتابعة الدورية : .....

التاريخ	ما تم انجازه من برتول البحث	المتبقي	توقيع المشرفين



## Declaration

Course Structure Mirror	Responsible (course) Coordinator Name:	Signature	Date
<b>Course 1 Histology (First Part)</b>			
<b>Course 2 Pathology (speciality course)</b> <b>Unit 1 General Pathology</b> <b>Unit 2 :GIT and Liver pathology</b> <b>Unit 3 Pathology of female genital organs and breast</b> <b>Unit 4 Genitourinary Pathology</b> <b>Unit 5 Head and Neck Pathology</b> <b>Unit 6 Pathology of intrathoracic organs</b> <b>Unit 7 Haematopoietic and lymphatic Pathology</b> <b>Unit 8 Soft tissue and Bone Pathology</b> <b>Unit 9 Neuropathology</b> <b>Unit 10 Endocrine organs pathology</b> <b>Unit 11 DermatoPathology</b> <b>Unit 12 Cytology</b> <b>Unit 13 Immunohistochemistry</b>			
<b>- Elective Course Certificate (s) Dates:</b>			
<b>- Master Degree Thesis Acceptance Date:</b>			
<b>Fulfillment of required credit points prior to final examination</b>			
<b>Pathology M Sc Degree Principle Coordinator:</b>			
<b>Date approved by Pathology Department Council:</b>			

يعتمد ،  
رئيس القسم

أ.د./